

Sandia Nordic Ski Club and FOSM: Working Together to Serve Our Community

FOSM Monthly Meeting
Tuesday, April 6, 2021



Agenda

- Overview of Sandia Nordic's mission and how the Club is performing vs mission statement components
- Update on Sandia Nordic's membership growth
- Community service provided by the Club
- An overview of existing groomed trail network and planned trail improvements (status of SF-299 application)
- Overview of FOSM's mission highlighting areas of focus in common with Sandia Nordic
- Opportunities to work together moving forward

Sandia Nordic Board of Directors



Officers:

- Scott Dietrich, President
- Jeff Huser, Vice President
- Paul Gorley, Treasurer
- Elizabeth Quinley, Secretary*

At Large:

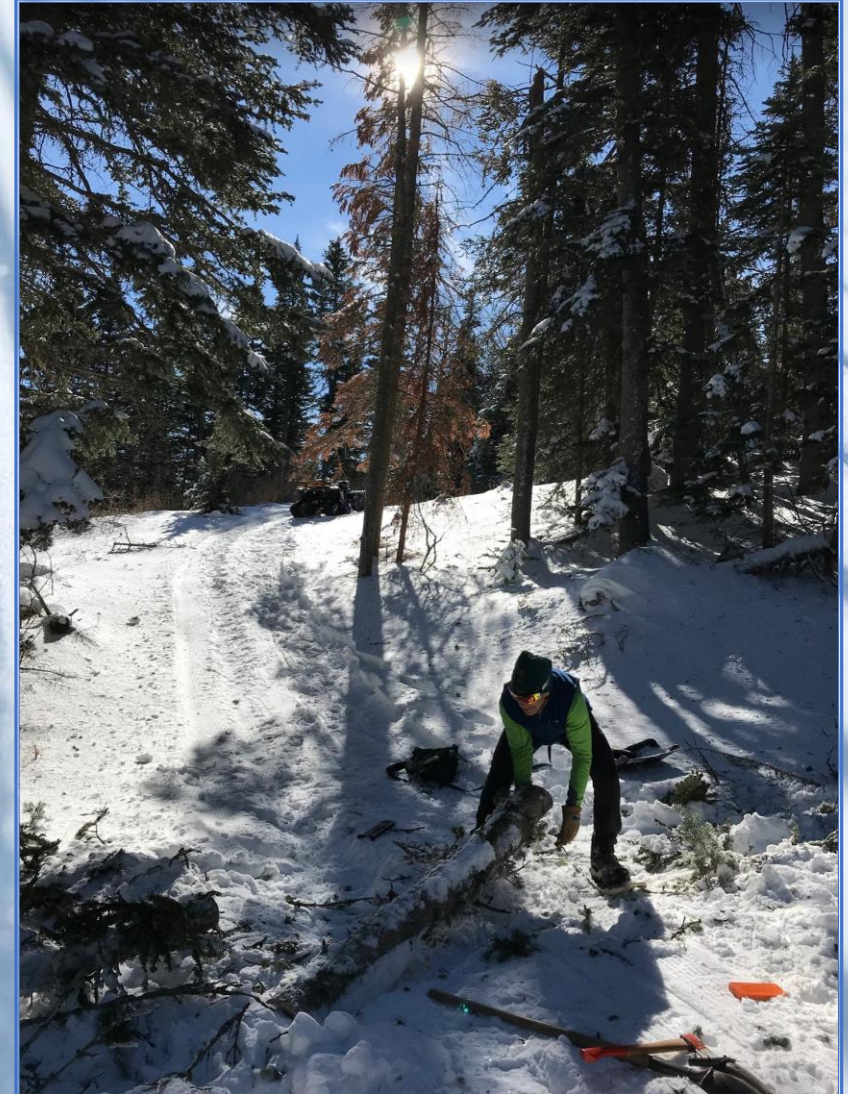
- Laura Biedermann*
- Erik Spoerke*
- Jon Dellios
- Greg Weix
- Karl Walczak

* Not pictured

Special Thanks to Jeff Huser and Steve Roholt



Special Thanks to Jeff and Steve



Special Thanks to Jeff and Steve



And of Course, to Sam Beard and All the Members of FOSM



Sandia Nordic Ski Club Mission Statement:

Sandia Nordic Ski Club is a non-profit corporation and shall operate exclusively for educational and charitable purposes within the meaning of Section 501(c)(3) of the Internal Revenue Code, or the corresponding section of any future Federal tax code. *The Club's general purpose is to advance the sport of cross-country skiing in the greater Albuquerque, New Mexico area.*

More Specifically Sandia Nordic Aims To:

- Promote the sport of cross-country skiing, including classic and skate skiing techniques, to families and individuals of all ages and abilities
- Provide the public with instruction on the various styles of cross-country skiing, as well as cross-country ski trail safety and etiquette and the health benefits associated with the sport
- Promote and support youth and adult cross-country skiing competitions and community events
- Purchase and maintain cross-country ski trail grooming equipment
- Directly engage in and provide facilities for others to engage in the promotion of cross-country skiing, including classic and skate skiing techniques
- Work in conjunction with the US Forest Service and other volunteer organizations to construct, maintain and provide the public with access to groomed cross-country ski trails in the Sandia Mountains of New Mexico
- Partner with USFS to help promote healthy forest management strategies and support environmental studies related to the potential impact of trail construction

What is Sandia Nordic Doing to:

- Promote the sport of cross-country skiing, including classic and skate skiing techniques, to families and individuals of all ages and abilities?
- Provide the public with instruction on the various styles of cross-country skiing, as well as cross-country ski trail safety and etiquette and the health benefits associated with the sport?

Sandia Nordic Kids Clinic, February 27, 2021

"Kids loved it! Were still talking about it at dinner time..." "Please do more!"



Sandia Nordic Kids Clinic 2021



Sandia Nordic Kids Clinic 2021



Classic Ski Clinics



Skate Ski Clinics



Waxing and Rollerskiing Classroom Clinics



Waxing Clinic



Rollerskiing Clinic

Rollerskiing

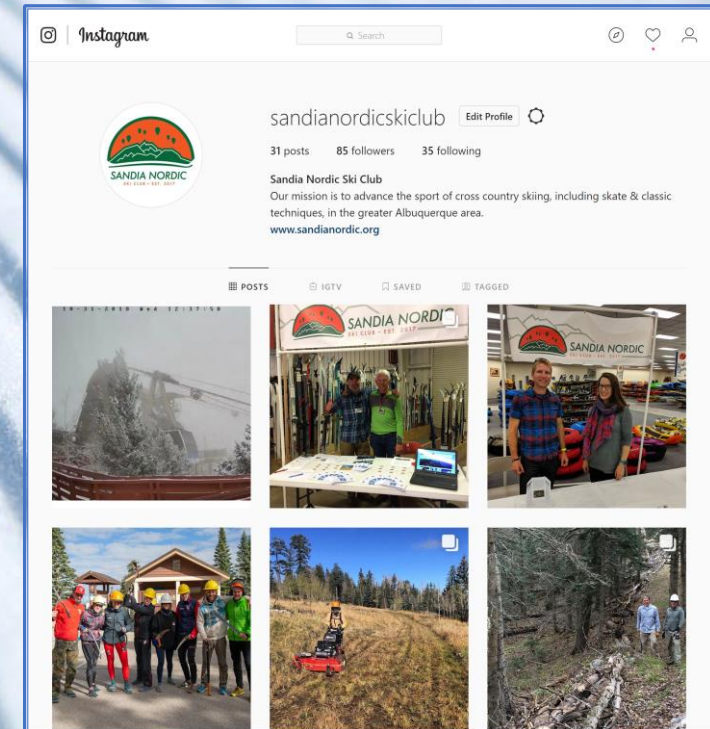
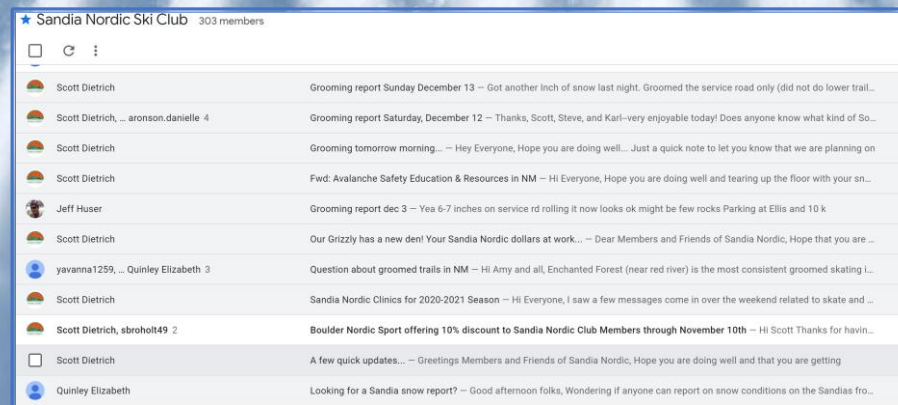
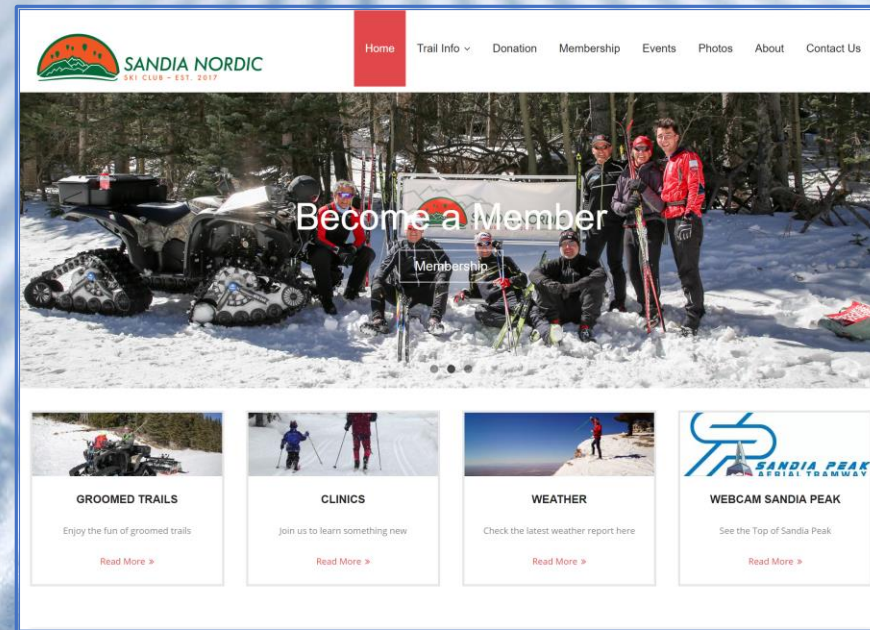
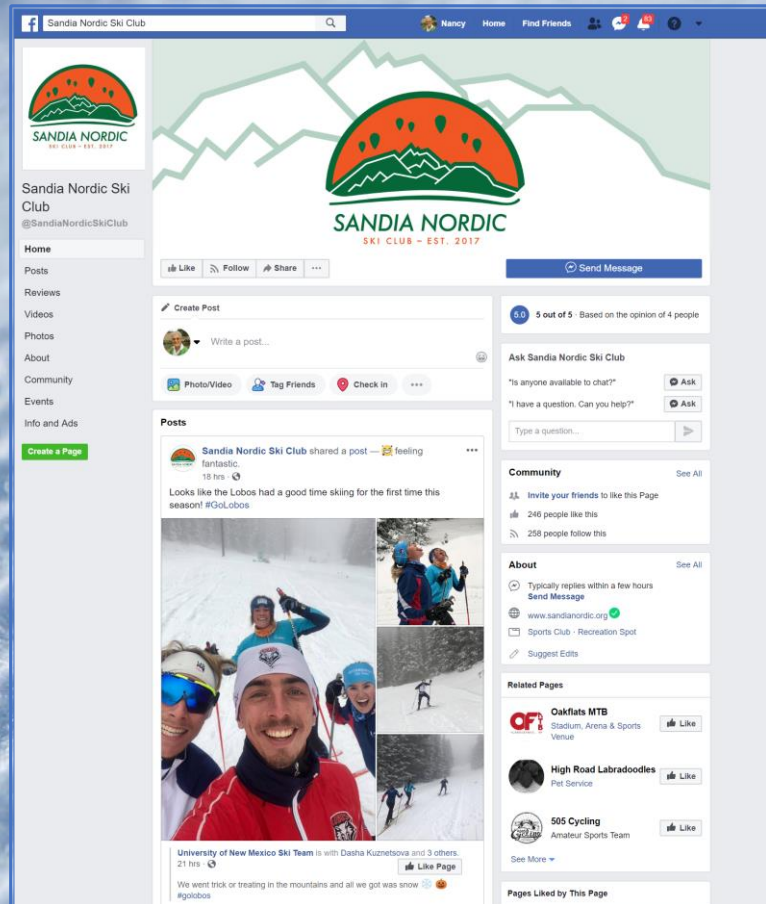


Classic Rollerskiing



Skate Rollerskiing

Strong Online and Social Media Presence



And “Original” Social Media Presence



Head for the hills

BY NANCY TIPTON
OF THE JOURNAL

While word of the first snow in northern New Mexico was the first reminder for most of us that winter is just around the corner, members of local cross-country ski clubs have been eagerly awaiting the season since they hung up their skis last spring. And they want to get more people involved in the sport.

The Sandia Nordic Ski Club, a new non-profit organization formed this year, has a long-term goal to work with volunteers and the U.S. Forest Service to maintain and groom a network of cross-country trails in the Sandias specifically for skate-skiing. “Our club is really focusing on improving the groomed trails in the mountains,” said Scott A. Dietrich.

The club, open to skiers of all ages and abilities, not only works on trails, but hosts instructional clinics to help skiers improve their skills.

Dietrich says club members include one member who was a nationally ranked cross-country ski biathlete and other who is a certified U.S. Ski Association Level 200 instructor.

Trail grooming has been done in recent years by the Sandia Peak Ski Area (service road between Ellis Trailhead parking lot and the ski area) and the UNM ski team. But, Dietrich says, the equipment is old and often breaks down.

“So we’re undertaking a rather ambitious plan to purchase new grooming equipment,” he said. That effort will cost about \$36,000.

COURTESY OF THE NEW MEXICO CROSS COUNTRY SKI CLUB

Ski trips including overnight hut excursions are part of the New Mexico Cross Country Ski Club program.

When the snow finally flies, area cross-country ski clubs will be ready for it

As part of that effort, the club is offering memberships and asking for additional donations. Information on donations to the 501(c)(3) is at sandianordic.org.

Dietrich says the club also plans to sponsor skiing competitions for youths and adults this winter.

Another local cross-country ski club, the New Mexico Cross Country Ski Club, has a wider focus.

According to Bet Gendron, vice president of the group, the club (which has about 350 members) organizes day ski tours not only in the Albuquerque area but also in the Jemez Mountains and in the Santa Fe area.

Some of the members also do remote backcountry skiing and often take multi-day trips.

“We also maintain trails in the Sandia and Jemez mountains,” she said. “When a tree is reported to have fallen across a ski trail, the group removes it for the safety of all trail users. This group plays a critical role in the maintenance of our exceptional trail system.”

In addition to skiing, the group has social events such as a winter holiday dessert potluck, a summer picnic and a New Year’s party in Silverton, Colo.

“We organize ski tours, ranging from flat and easy to more aggressively climbing mountains and skiing down,” Gendron said. “We also provide instruction for beginning and intermediate cross-country skills.”

The group has monthly meetings with guest speakers. Info: nmccskiclub.org.

Albuquerque Journal

11/15/16, 7:33 AM

Let's Go!

Ski clubs, volunteers getting trails ready for the new season



ROSALIE RAYBURN / FOR THE JOURNAL Michael Arndt, left, a volunteer with Friends of the Sandia Mountains, uses a peavey to move a downed tree so Sam Beard, right, will be able to cut it into shorter lengths to help in building a trail.

BY ROSALIE RAYBURN FOR THE JOURNAL

14 ALBUQUERQUE JOURNAL DECEMBER 16, 2017

LIVING

LIFE IN NEW MEXICO

LIVING

LIFE IN NEW MEXICO 15



The New Mexico Cross Country Ski Club does trail maintenance in the Jemez Mountains.

COURTESY OF BET GENDRON

PITCHING IN

Local volunteer groups help maintain cross country ski trails

BY ROSALIE RAYBURN

FOR THE JOURNAL

Knowing the trails of the Sandia Mountains in good shape for cross-country skiing is truly a team effort. Sam Beard has been volunteering his time since the early 1970s to help create and maintain the ski trails in the Sandia Mountains as part of the New Mexico Cross Country Ski Club. Beard might be the guy who got it all started, but today the Friends of the Sandia Mountains, the Sandia Nordic Ski Club and others also pitch in to do everything from leveling trails to restoring fallen trees.

The U.S. Forest Service, which manages the Sandias, doesn't have the resources to get all that work done on its own.

“They’re unfortunately very, very limited,” as the managing director for them to keep up,” says Bob Linder, president of the Friends of the Sandia Mountains, known as FOSS.

FOSS spends most of its time taking fallen trees off trails but also rebuilds and maintains trails year-round in cooperation with the Forest Service.

Miles of trails Cross-country skiers use two types of trails: backcountry trails and groomed trails. The backcountry trails don't require as much work, while the groomed trails need attention once or twice a week to stay

In top shape, says Chris Norton of the Sandia Nordic Ski Club. Norton, a skier who raced for 12 years in biathlon events for the U.S. military in Europe, is one of a few people qualified to run grooming machines to level the snow and groom the side of the trail for classic skiers. The machine is used to level the snow and groom the side of the trail for classic skiers. The machine is used to level the snow and groom the side of the trail for classic skiers.

The Sandia Nordic Ski Club has been working to expand the groomed trails with an area of switchback trail near the Ellis and Elk trail parking areas.

“It’s a beautiful area,” Norton says. “When you ski, you can see all the way to Santa Fe.”

There are about three miles of trail in a fairly open half-mile to half-mile area, making a great place for skiing down and seeing the kids along the way.

The switchbacks also are easier to ski than trails that go more directly up or down.

“We really think the groomed trails are going to be a new addition,” Norton says.

The Sandia Nordic Ski Club is a non-profit organization that promotes cross-country skiing and works with the Forest Service and other volunteer organizations to maintain and provide public access to groomed trails in the Sandias.

The group hopes to raise money for the trails and equipment the system, says President Scott Dietrich.

“Already the club has raised enough money to buy a Yamaha Grizzly ATV with snow tracks to pull the grooming machine,” he says.

“It’s a big job,” Landwehr says. “It requires about four or five hours to groom the roughly 10 kilometers of trails that the ski team takes care of on that service road between Sandia Peak and the town and on the Elk Trail area.”

This winter, the ski team and the Sandia Nordic Ski Club hope to get a competitive ski clinic, something that hasn't been done for years, Landwehr says.

In addition to grooming trails with a snowmobile, trail work involves shoveling in level trails and back corners as well as removing downed trees.

Groups of six to 12 volunteers from the New Mexico Cross Country Ski Club often tackle a day of work, grooming branches, cutting brush and replacing blow-downs. Landwehr says that have been about 100 trees.

When it comes to removing trees, the Forest Service can cut them down in some areas that only non-motorized trails are allowed in wilderness areas. Once they have cut up a fallen tree, they use a tool called a rest log, a giant log attached to a tree, to roll the pieces of log to a safe spot off the trail.



Members of Sandia Nordic Ski Club move snow from the high to low side of a trail in the Sandia Mountains to help level the trail.

With Beard as trails chairman for the New Mexico club and projects chairman for FOSS, the two groups work closely together to keep the Sandia Nordic Ski Club, Friends of the Sandia Mountains, the Sandia Nordic Ski Club and other volunteer organizations to maintain and provide public access to groomed trails in the Sandias.

WE REALLY THINK THE GROOMED TRAILS ARE GOING TO BE A NEW ADDITION.

ROSALIE RAYBURN / FOR THE JOURNAL

Volunteers also work on other trails around the area. For example, the Los Alamos Nordic Ski Club maintains the Papito Nordic Ski Trail in the Sandias.

The New Mexico Cross Country Ski Club also maintains trails on unimproved Forest Service roads in the Jemez Mountains, including ones near Bandera Campground and in the East Fork, Los Gatos and Pecos areas as well as trails in the Carson, El, South Mountains and Valle Grande areas of the Sandia Mountains.

“It’s a big job,” Landwehr says. “It requires about four or five hours to groom the roughly 10 kilometers of trails that the ski team takes care of on that service road between Sandia Peak and the town and on the Elk Trail area.”

This winter, the ski team and the Sandia Nordic Ski Club hope to get a competitive ski clinic, something that hasn't been done for years, Landwehr says.

In addition to grooming trails with a snowmobile, trail work involves shoveling in level trails and back corners as well as removing downed trees.

Groups of six to 12 volunteers from the New Mexico Cross Country Ski Club often tackle a day of work, grooming branches, cutting brush and replacing blow-downs. Landwehr says that have been about 100 trees.

When it comes to removing trees, the Forest Service can cut them down in some areas that only non-motorized trails are allowed in wilderness areas. Once they have cut up a fallen tree, they use a tool called a rest log, a giant log attached to a tree, to roll the pieces of log to a safe spot off the trail.

Informational Brochure and Business Cards



Committed to Advancing the Sport of
Cross-Country Skiing in the Greater
Albuquerque Area



Sandia Nordic Ski Club was founded in 2017 by a group of cross-country skiing enthusiasts who are dedicated to advancing the sport of cross-country skiing – including classic and skate skiing techniques – in the greater Albuquerque area. The Club has a working relationship with the US Forest Service and endeavors to improve and expand the network of groomed cross-country ski trails at the top of the Sandia Mountains.

□



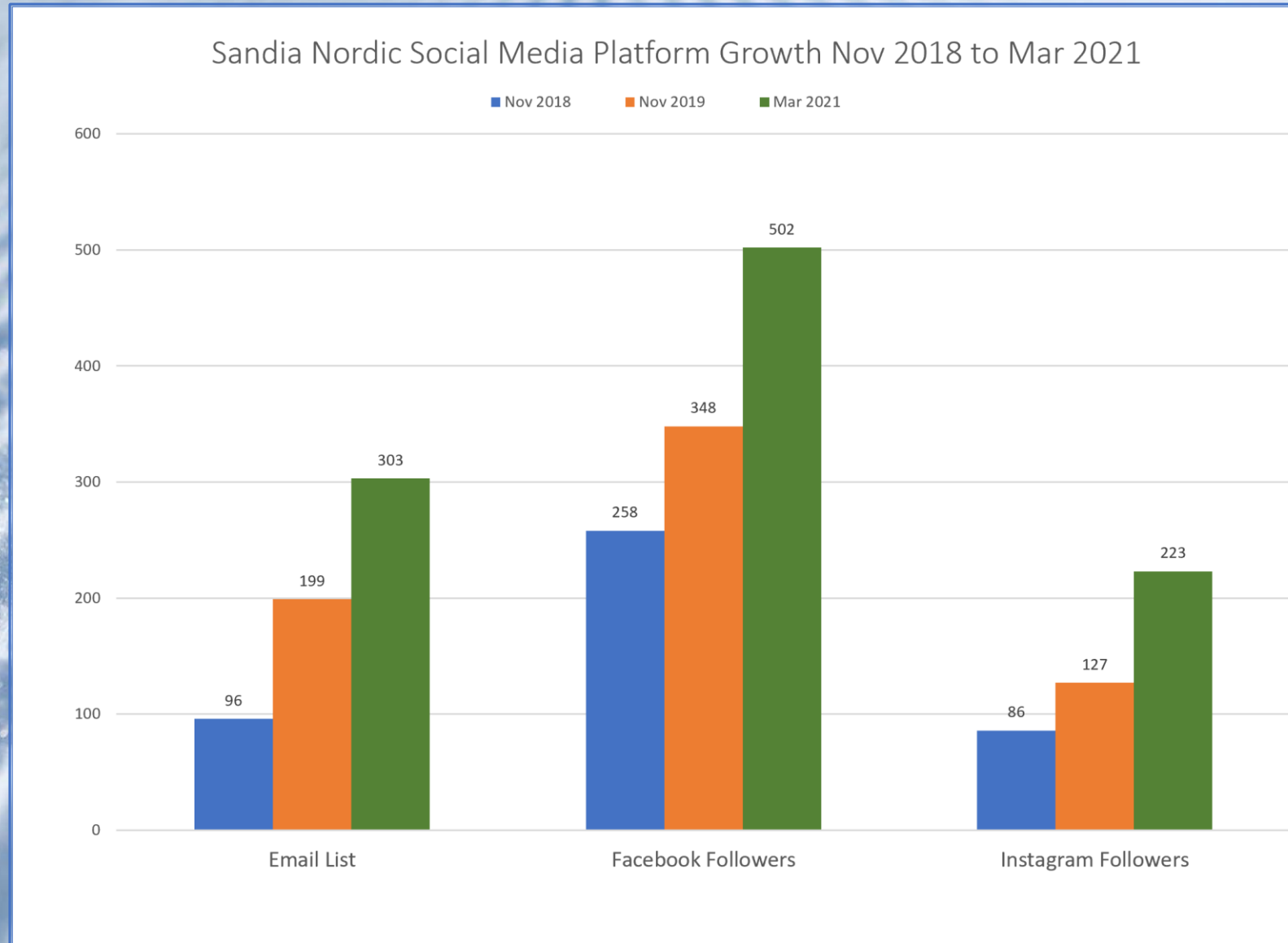
Participate in Membership Outreach Events



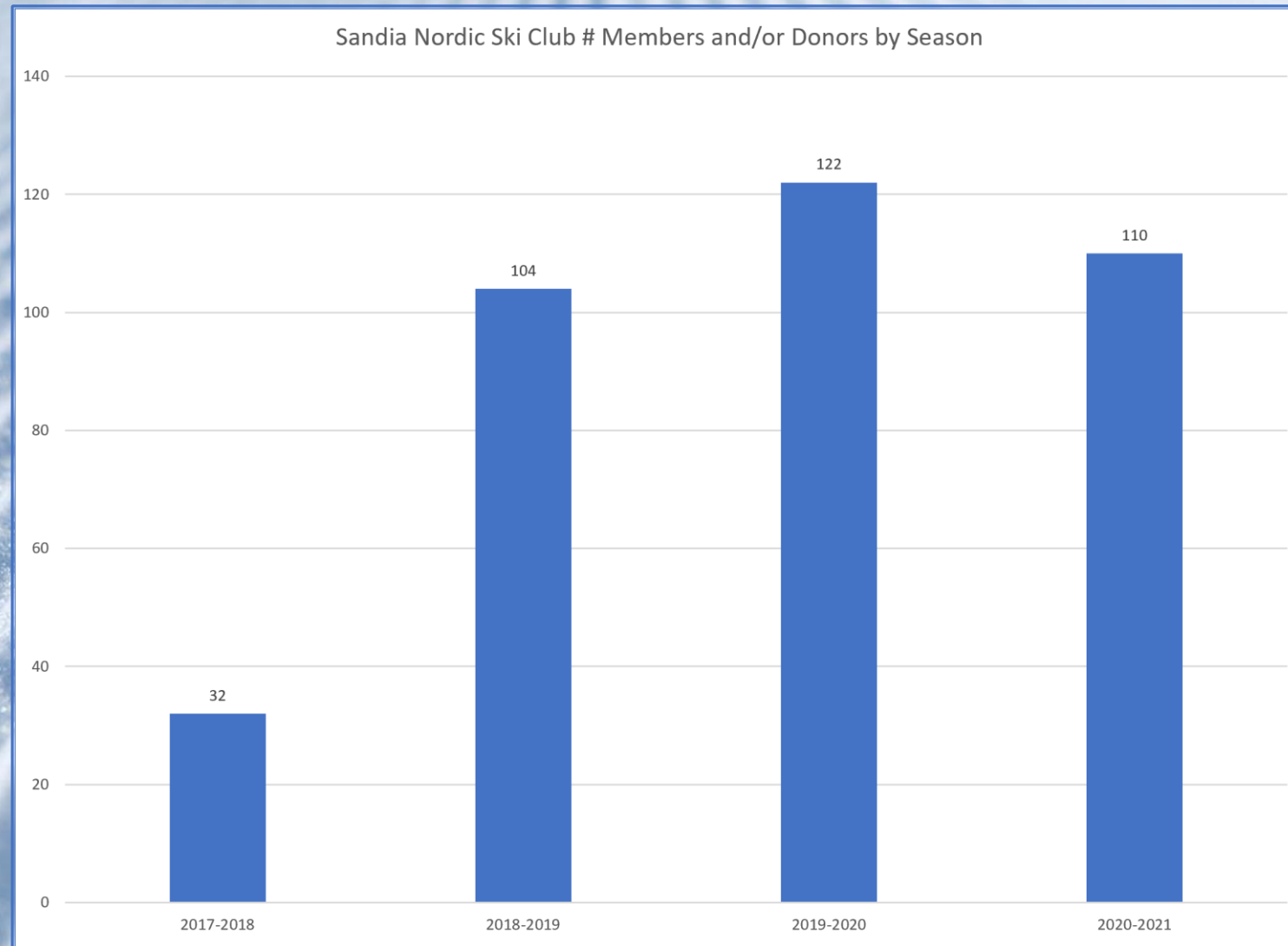
Participate in Membership Outreach Events



Sandia Nordic Social Media Growth



Sandia Nordic Member and/or Donor Growth




Community Service



Community Service

Form No. A-1204
Rev 11/2018

 **ADOPT A HIGHWAY AGREEMENT AND PERMIT**

Applicant Name: Sandia Nordic Ski Club, hereafter "Adoptee."

Mailing Address: 13004 Sandia Point Road NE Phone: (505) 350-5233

City: Albuquerque State: NM Zip 87111 Alternate Phone: (505) 856-0768

Adoptee Group Coordinator Contact: Scott Dietrich Email Address: sandianordic@gmail.com

Mailing Address: 13004 Sandia Point Road NE Phone: (505) 350-5233

City: Albuquerque State: NM Zip 87111 Alternate Phone: (505) 856-0768

Adoptee is committed to picking up trash and litter along the section of Highway 536, from milepost 11 to 12 a minimum of **two (2) times each calendar year**. Adoptee expects to have approximately 10 participants during each clean-up.

Sign Layout (Generally there are two lines with a maximum of 15 characters each, including spaces).

S a n d i a N o r d i c
S k i C l u b

Adoptee has read and understands all provisions contained below and will abide by them and any other terms and conditions as required by the New Mexico Department of Transportation (NMDOT) for participation in the Adopt a Highway program. Adoptee is also responsible for ensuring such compliance by each of its group participants (Participants) during each scheduled clean-up.

Agreement/Permit Provisions

1. Adoptee's Participants must review the Safety Guidelines prior to any planned clean-ups. It is the responsibility of the Group Coordinator to review the safety guidelines with the group members before clean-ups. Potential dangers involved while participating in this program of state highways can include, but are not limited to: high speed traffic, potentially noxious plants, broken glass, hazardous materials, sharp metal, and potentially harmful wildlife such as snakes and skunks.
2. Adoptee will notify the NMDOT Adopt a Highway Coordinator no earlier than thirty (30) days or no later than fourteen (14) days prior to a planned pickup so that trash bags may be scheduled to be removed by the NMDOT in a timely manner.
3. Adoptee agrees to restrict program activities to the area of right-of-way off of the traveled portion of the roadway. (Stay off of the Asphalt!)
4. The purpose of the Adopt a Highway program is to beautify by litter abatement, highway roadsides and medians. While performing activities on the right-of-way, the method, manner, and appearance of the Participants will not in any way distract, disrupt, or adversely affect traffic. Participants may not display messages, carry banners, or advertise their business affiliation or cause.
5. The NMDOT prohibits the possession, consumption, or being under the influence of alcohol or drugs while performing work or litter pick up on State Highway right-of-way.
6. Adoptee shall provide one adult supervisor for every five (5) Participants between 12-17 years of age. Special arrangements need to be made with the NMDOT Adopt a Highway Coordinator for Participants under the age of 12 years old.
7. Program activities will be between the hours of one hour after sunrise to one hour before sunset and not during inclement weather.

What is Sandia Nordic Doing to:

- Promote and support youth and adult cross-country skiing competitions and community events?

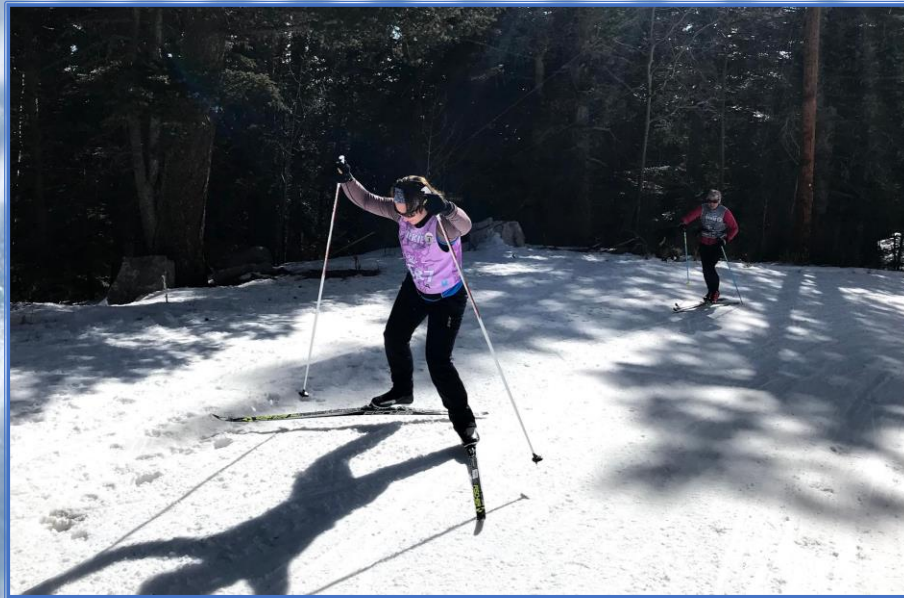
Sandia Nordic - American Birkebeiner Virtual Venue Partner 2021



Sandia Nordic - American Birkebeiner Virtual Venue Partner 2021



Sandia Nordic - American Birkebeiner Virtual Venue Partner 2021



Volunteering at UNM Ski Team Home Course Race 2019



Volunteering at UNM Ski Team Home Course Race 2019



What is Sandia Nordic Doing Regarding the:

- Purchase and maintenance of cross-country ski trail grooming equipment?

Purchased New Grooming Equipment



700 cc Yamaha Grizzly ATV with Snowtracks
“The Grizz”



84" Yellowstone Track Systems Ginzugroomer

84" Ginzugroomer with Track Setter



YTS Roller/Compactor and Track Setter

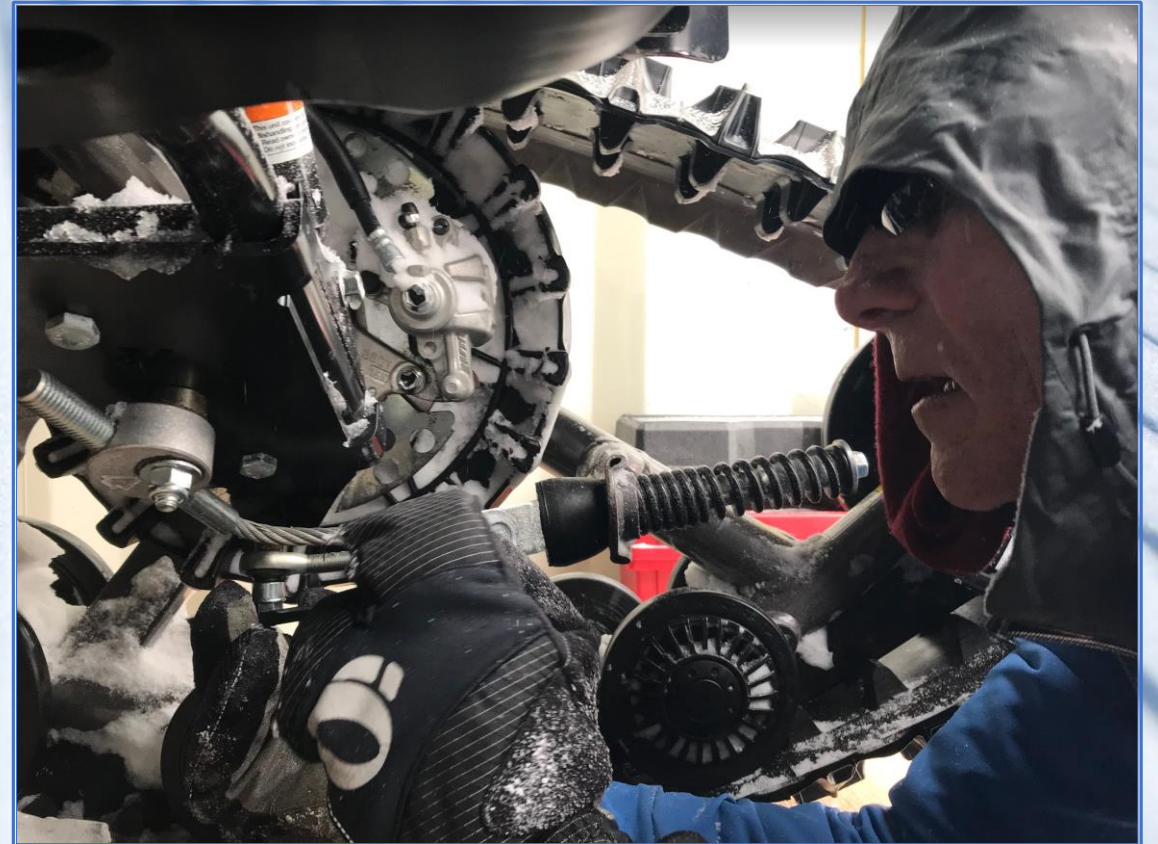


YTS Roller Compactor



Track Setter with Electric Actuator

Maintaining the Grizz...



Maintaining the Grizz...



Building Ramps for Our New Container



Annual Grizzly Migration



Expenses Related to Purchase and Maintenance of Grooming Equipment

Expense	Amount
Capital Equipment	\$19,513.94
Capital Equipment Financing	\$11,680.57
Capital Equipment Maintenance	\$1,432.27
Container Rental	\$6,185.98
General Operations	\$2,597.44
Total	\$41,410.20

What is Sandia Nordic Doing to:

- Directly engage in and provide facilities for others to engage in the promotion of cross-country skiing, including classic and skate skiing techniques?

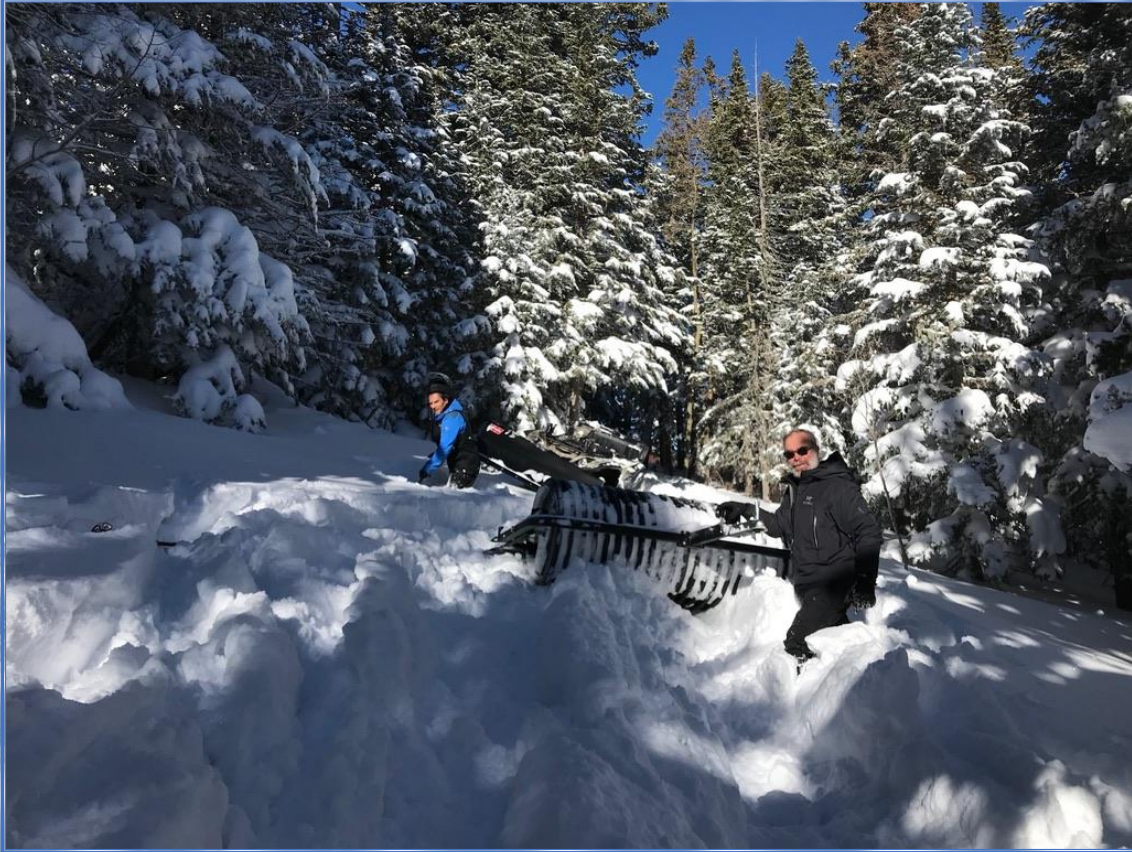
Mowing the Meadows



Late Fall Trail Maintenance



Winter Trail Maintenance



Shoveling Snow to Level the Trails



Grooming in the 10K Meadow



Grooming Has Its Challenges



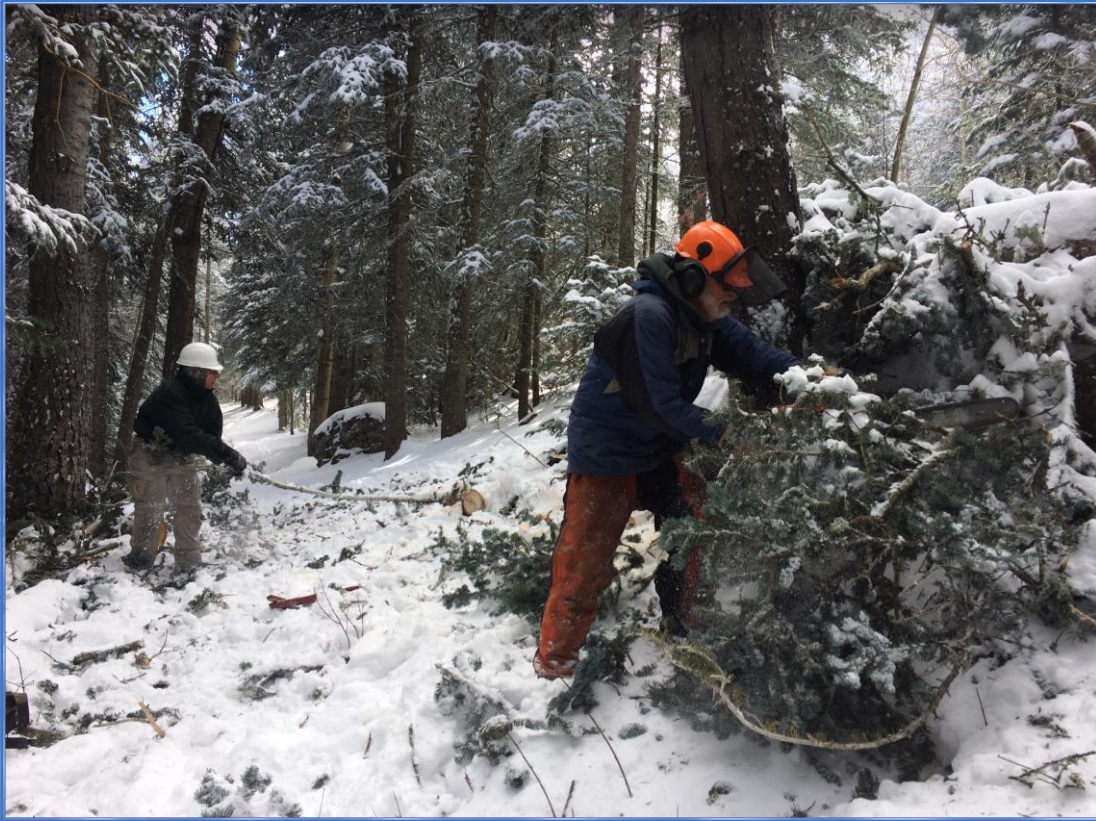
Stuck in Deep Snow in the 10K Meadow



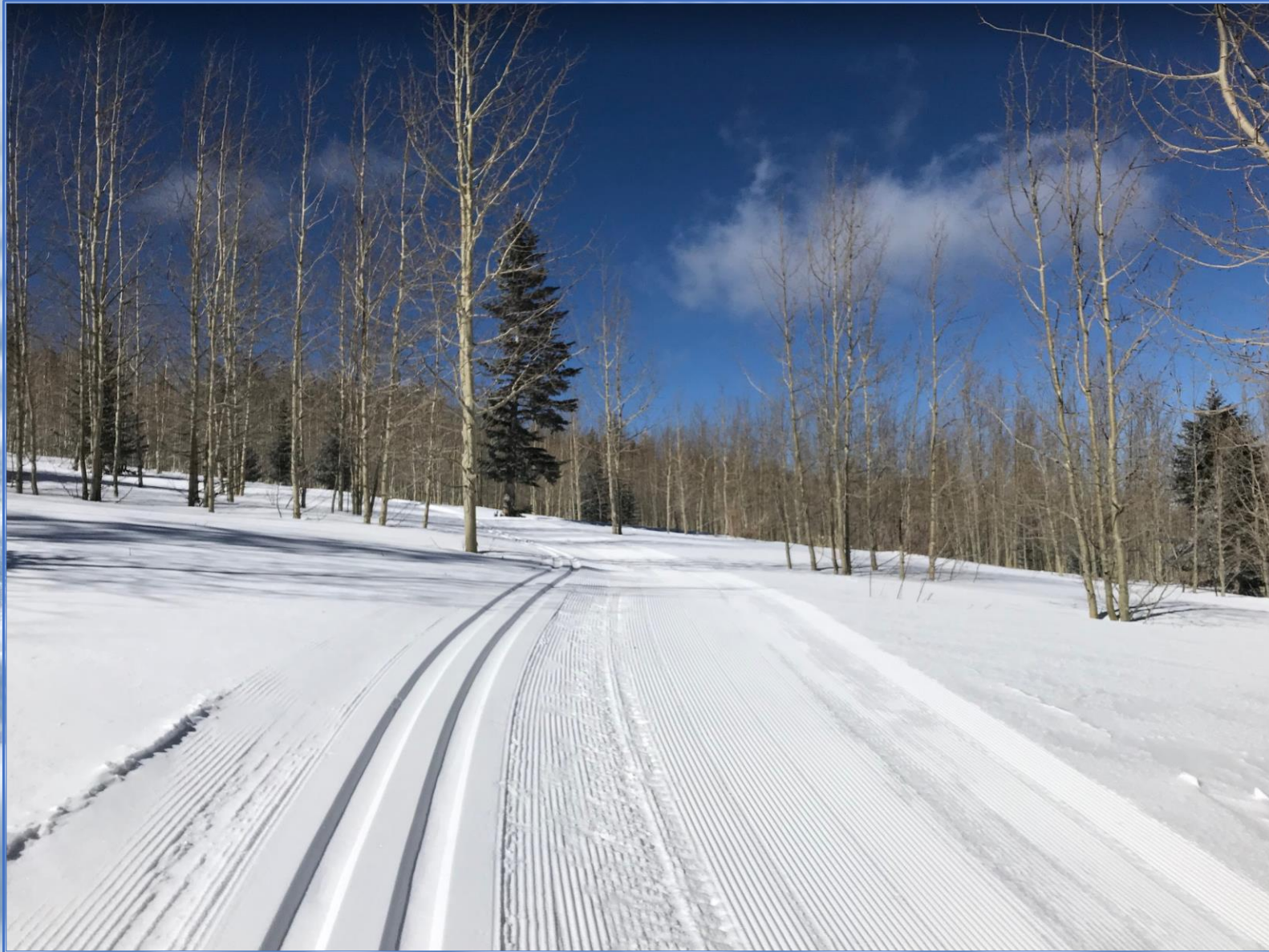
Keeping the Trails Open



Keeping the Trails Open



Finished Product



What is Sandia Nordic Doing to:

- Work in conjunction with the US Forest Service and other volunteer organizations to construct, maintain and provide the public with access to groomed cross-country ski trails in the Sandia Mountains of New Mexico?
- Partner with the USFS to help promote healthy forest management strategies and support environmental studies related to the potential impact of trail construction?

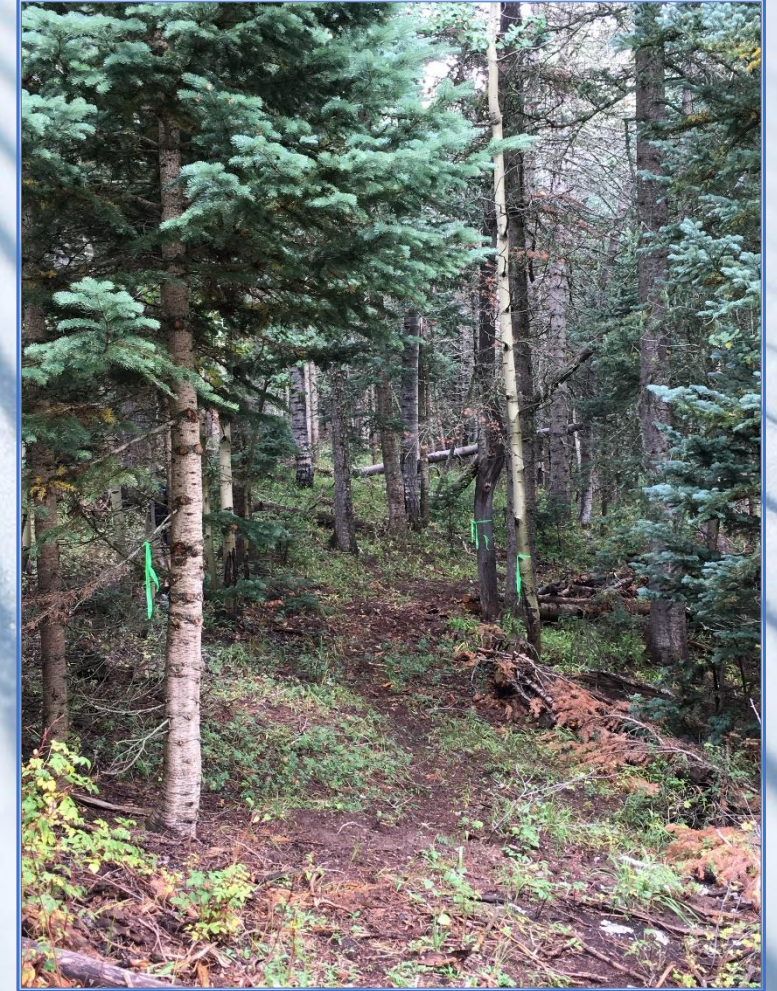
Partnering with Sandia Ranger District



Partnering with Sandia Ranger District



Fundamental Improvements Approved Late 2016



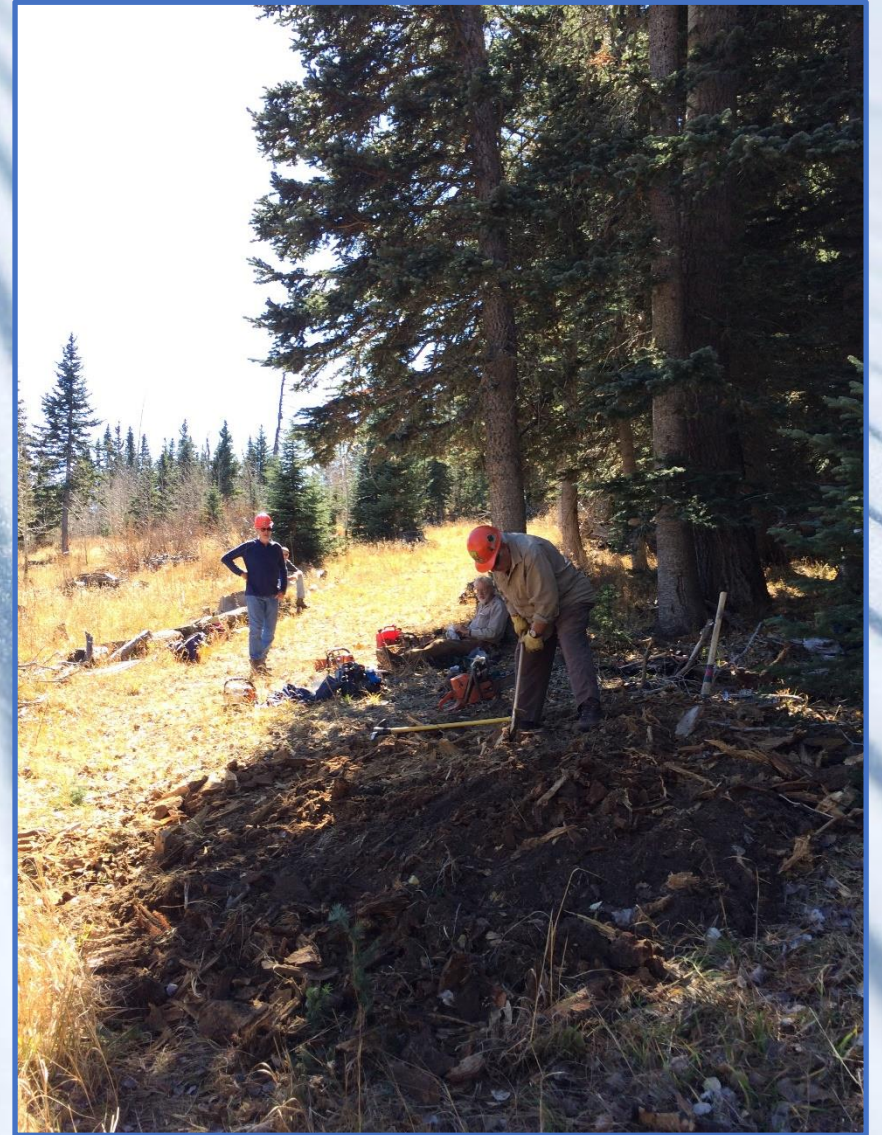
Fundamental Improvements Approved Late 2016



FOSM Has Been a Critical Partner to Sandia Nordic























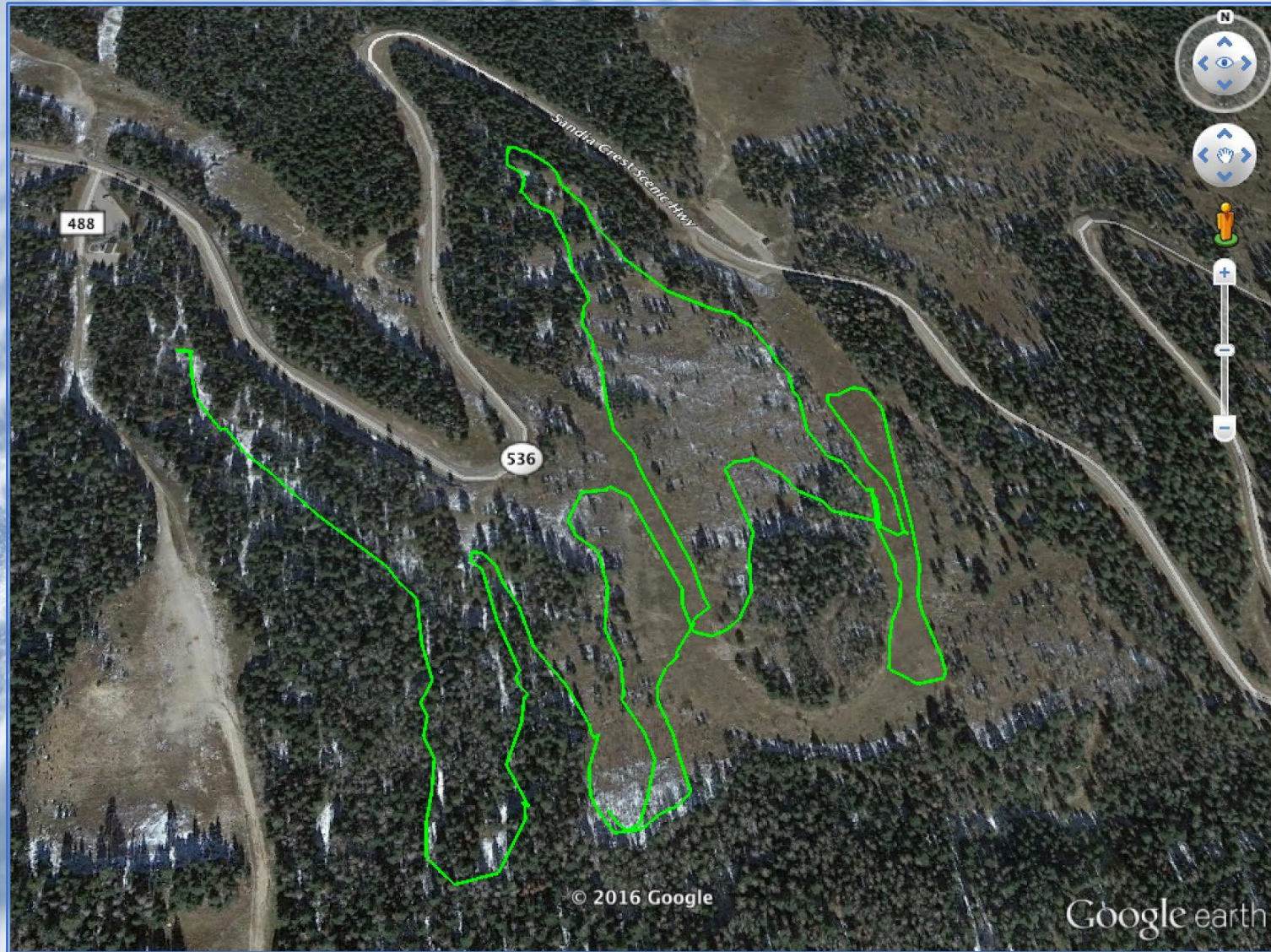


Thank You to All the Members of FOSM
Who Have Helped Improve the
Sandia Nordic Groomed Trail System

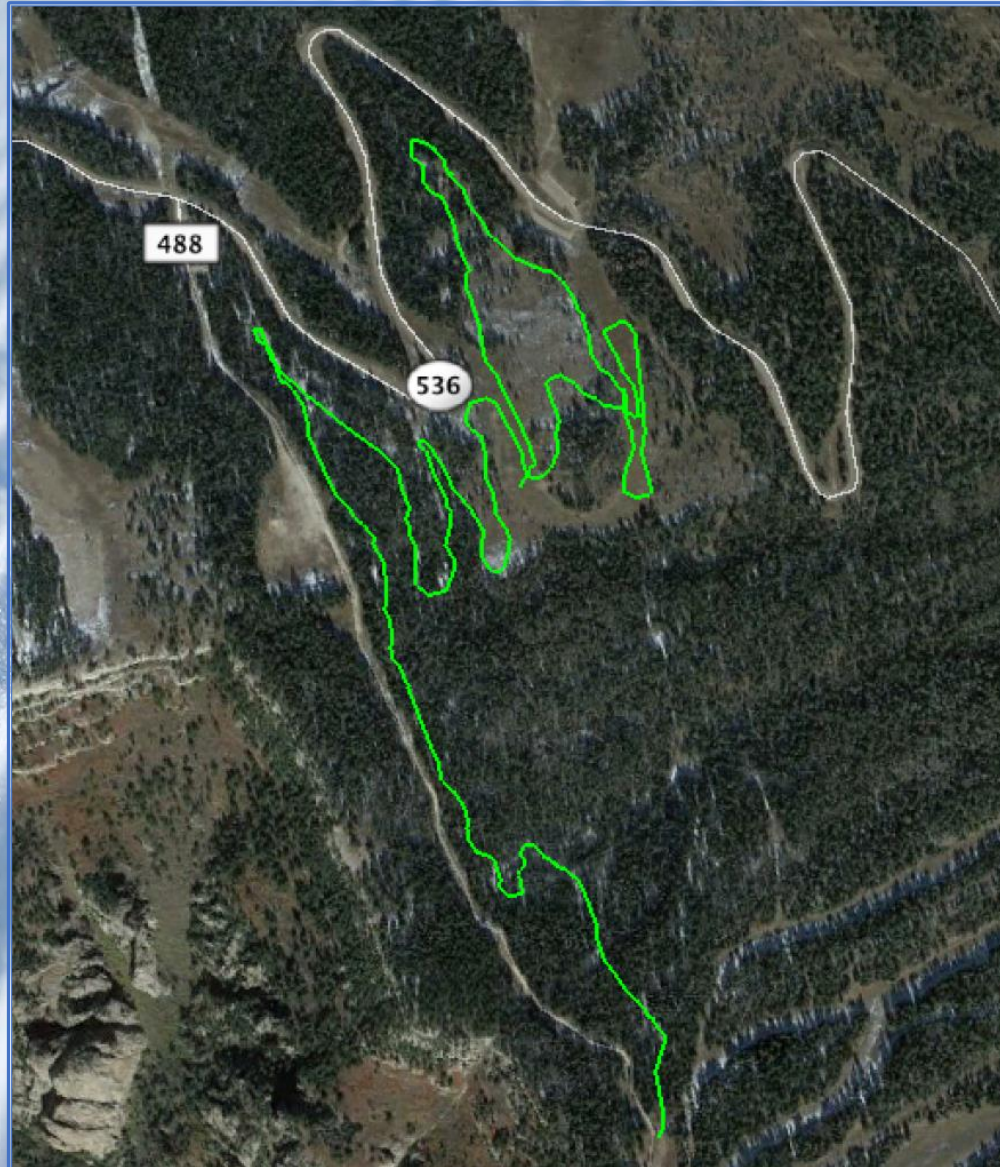
We Could Not Do It Without Your Support

Overview of Groomed Trail Network and Planned Improvements

Map of Current Groomed XC Ski Trail



Map of Current Groomed XC Ski Trail with Klaus Trail



Sandia Nordic Submitted an SF-299 Application with USFS to Improve Trail System in June, 2017

APPLICATION FOR TRANSPORTATION AND UTILITY SYSTEMS AND FACILITIES ON FEDERAL LANDS

STANDARD FORM 299

SUBMITTED BY SANDIA NORDIC SKI CLUB, INC.

JUNE 5, 2017

ATTACHMENTS AND ADDENDA

Sandia Nordic Ski Club SF-299 Attachments and Addenda 5 June 2017 Final.docx

page 1 of 17

STANDARD FORM 299 (1/2009) Prescribed by DOI/USDA/DOI P.L. 96-437 and Federal Regulations 5-22.95		FORM APPROVED OMB NO. 1004-0189 Expires: April 30, 2012
APPLICATION FOR TRANSPORTATION AND UTILITY SYSTEMS AND FACILITIES ON FEDERAL LANDS		FOR AGENCY USE ONLY
NOTE: Before completing and filing the application, the applicant should completely review this package and schedule a preapplication meeting with representatives of the agency responsible for processing the application. Each agency may have specific and unique requirements to be met in preparing and processing the application. Many times, with the help of the agency representative, the application can be completed at the preapplication meeting.		Application Number _____ Date filed _____
1. Name and address of applicant (include zip code)	2. Name, title, and address of authorized agent (if different from item 1 (include zip code))	3. TELEPHONE (area code) Applicant (505) 350-5233 Authorized Agent (505) 350-5233
Sandia Nordic Ski Club, Inc. Attn: Scott Dietrich 13004 Sandia Point Road NE Albuquerque, NM 87111		
4. As applicant are you? (check one) a. <input type="checkbox"/> Individual b. <input checked="" type="checkbox"/> Corporation* c. <input type="checkbox"/> Partnership/Association* d. <input type="checkbox"/> State Government/State Agency e. <input type="checkbox"/> Local Government f. <input type="checkbox"/> Federal Agency	5. Specify what application is for: (check one) a. <input type="checkbox"/> New authorization b. <input type="checkbox"/> Renewing existing authorization No. c. <input type="checkbox"/> Amend existing authorization No. d. <input type="checkbox"/> Assign existing authorization No. e. <input type="checkbox"/> Existing use for which no authorization has been received* f. <input type="checkbox"/> Other*	
*If checked, complete supplemental page		*If checked provide details under item 7
6. If an individual, or partnership are you a citizen(s) of the United States? <input type="checkbox"/> Yes <input type="checkbox"/> No		
7. Project description (describe in detail): (a) Type of system or facility; (e.g., canal, pipeline, road); (b) related structures and facilities; (c) physical specifications (length, width, grading, etc.); (d) term of years needed; (e) time of year of use or operation; (f) Volume or amount of product to be transported; (g) duration and timing of construction; and (h) temporary work areas needed for construction (Attach additional sheets, if additional space is needed.)		
See Addendum 1		
8. Attach a map covering area and show location of project proposal		
9. State or local government approval: <input type="checkbox"/> Attached <input type="checkbox"/> Applied for <input type="checkbox"/> Not required		
10. Nonreturnable application fee: <input type="checkbox"/> Attached <input type="checkbox"/> Not required		
11. Does project cross international boundary or affect international waterways? <input type="checkbox"/> Yes <input checked="" type="checkbox"/> No (If "yes," indicate on map)		
12. Give statement of your technical and financial capability to construct, operate, maintain, and terminate system for which authorization is being requested.		
<p>The Sandia Nordic Ski Club, Inc., was recognized as an official 501(c)(3) corporation by the State of New Mexico on April 17, 2017. The IRS granted 501(c)(3) nonprofit public charity status on April 27, 2017. The Club will be registering with the New Mexico Department of Taxation and Revenue, as well as the office of the State Attorney General by the end of the month of May, 2017. At this point, no funds have been raised as the Board of Directors prefers to have the two registrations mentioned above in place prior to actively raising funds. A preliminary analysis indicates that it is likely the Club will be able to raise between \$10,000 and \$20,000 in the first 2 years of operation. These funds will come directly from donations of Club members, members of the community who are not Club members, Corporate donations and, potentially, grant money as well. Financial obstacles to purchasing required insurance, as well as new grooming equipment and renting a storage container to house grooming equipment are not anticipated. Additionally, the Club may, if extremely successful with their fund raising efforts, be able to fund a 3rd party NEPA contractor to conduct any NEPA studies related to potential Categorical Exclusion requests related to improvements to the groomed cross country ski trails mentioned in (7), above. The estimated cost to contract a 3rd party NEPA contractor is between \$15,000 - \$25,000. The Club will make certain that all operators of grooming equipment, including snow mobiles and, potentially ATVs, have undergone the necessary training and certification to operate the equipment safely per the guidance of the USFS.</p>		

(Continued on page 2)

This form is authorized for local reproduction.

USDA, Forest Service		OMB 0596-0217 FS-1500-160
FS Agreement No. _____		
Cooperator Agreement No. _____		

NON FUNDED PARTICIPATING AGREEMENT Between The SANDIA NORDIC SKI CLUB, INC. And The USDA, FOREST SERVICE SANDIA RANGER DISTRICT, CIBOLA NATIONAL FOREST AND NATIONAL GRASSLANDS

This PARTICIPATING AGREEMENT is hereby entered into by and between the Sandia Nordic Ski Club, Inc., hereinafter referred to as "SNSC" and the USDA, Forest Service, Sandia Ranger District, Cibola National Forest and National Grasslands, hereinafter referred to as the "U.S. Forest Service," under the authority:

Background: This application is being made to formalize the relationship between Sandia Nordic Ski Club, Inc., a 501(c)(3) nonprofit public charity focused on enhancing the quality of the groomed cross country ski trails at the top of the Sandia mountains, and the Sandia Ranger District. Specifically, the application requests permission to continue to groom the existing cross country ski trails located between the Ellis and 10K parking lots, just east of the "service road" (the unpaved road which links the Ellis parking lot to the Sandia Peak Ski Area upper tram terminal), and within the Sandia Ranger District of the Cibola National Forest and National Grasslands.

Title: Agreement between SNSC and USFS, Sandia Ranger District, Cibola National Forest and National Grasslands, to allow SNSC to groom cross country ski trails located between Ellis and 10K parking areas.

I. PURPOSE:

The purpose of this agreement is to document the cooperation between the parties to groom the cross country ski trails between the Ellis and 10K parking areas in accordance with the following provisions and the hereby incorporated Financial Plan, attached as _____.

II. STATEMENT OF MUTUAL BENEFIT AND INTERESTS:

Although cross country touring trails have existed in the Sandia Mountains for many decades, they are primarily narrow hiking trails that have little or no snow management during winter. Typically, these trails are heavily used after a snowfall (especially on weekends) and then see little use until the next snowfall which may occur weeks later. During use, the narrow trails are

Page 1 of 12

(Rev. 9-15)

Fundamentally the Application Seeks Approval to:

- Continue to groom the existing cross-country ski trails located between the Ellis and 10K parking lots
- Make improvements to the existing groomed trails to address areas with poor visibility, inappropriate contours and significant sidehill grades
- Remove deadfall and a limited number of trees from the old Klaus Trail to provide an alternate route for the grooming equipment to access the lower trails
- Add approximately 1.5 miles of trails to the existing groomed trail network
- Have the trails officially designated as winter only recreation trails

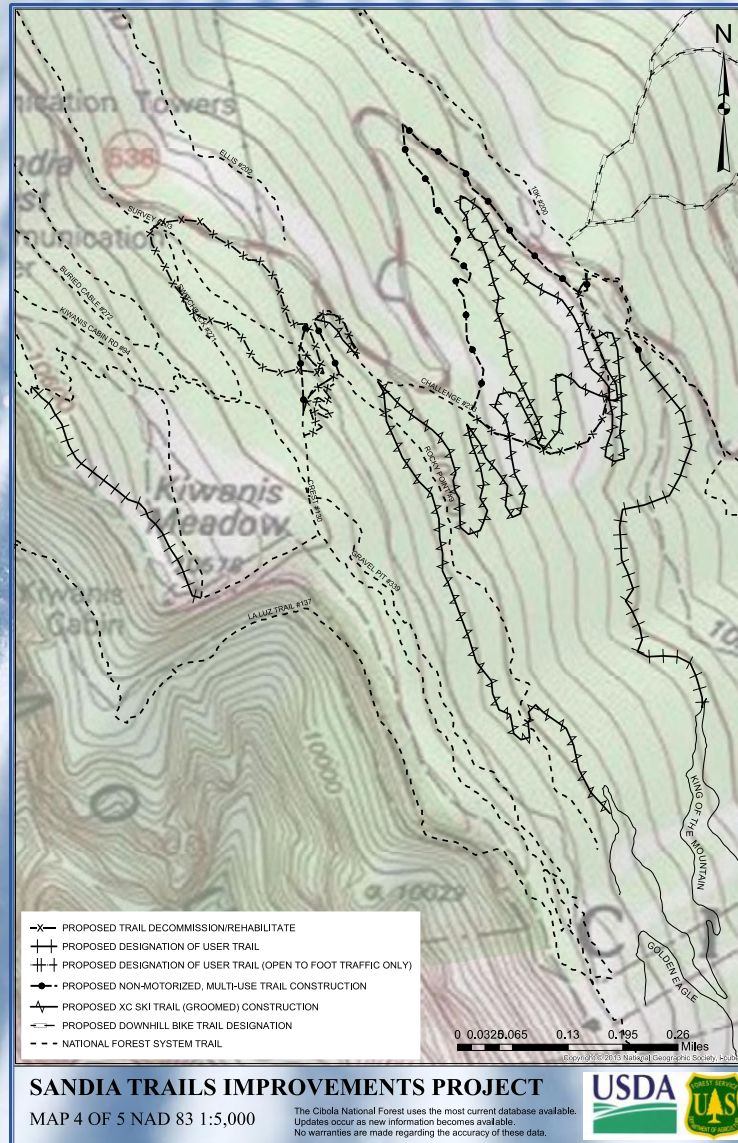
SRD Has Listened to Our Input and Answered Our Questions



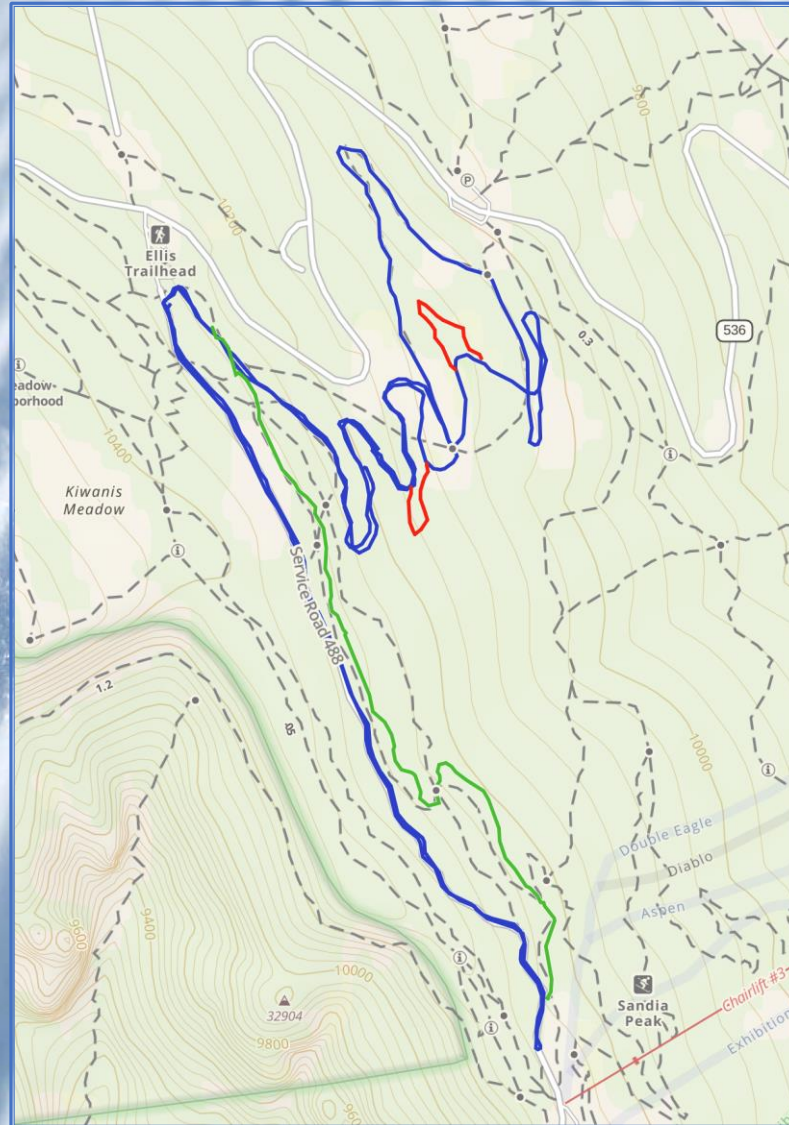
Public Scoping Meeting on Sandia Trails Improvement Project, July 2019



Sandia Trails Improvement Project: Groomed Trails (Map 4)



Potential Additions: North and South Aspen Extensions



But Navigating the System Takes Time...



Sandia Trails Improvement Project: Groomed Trails

Next Steps?

Is Sandia Nordic Accomplishing our Mission?

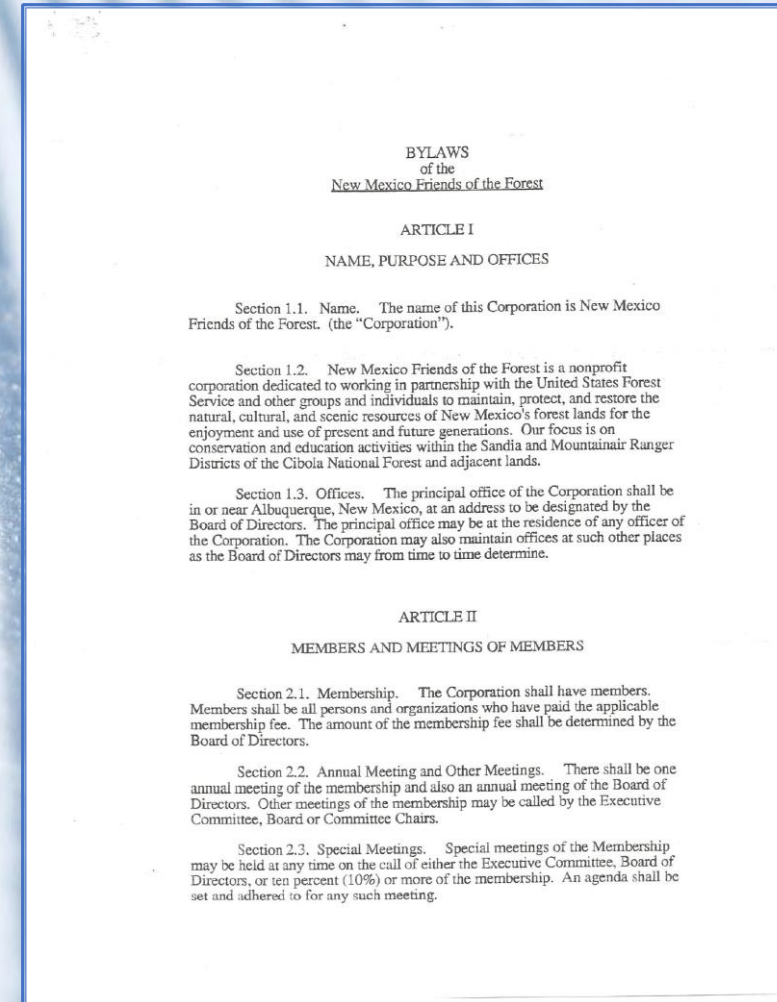
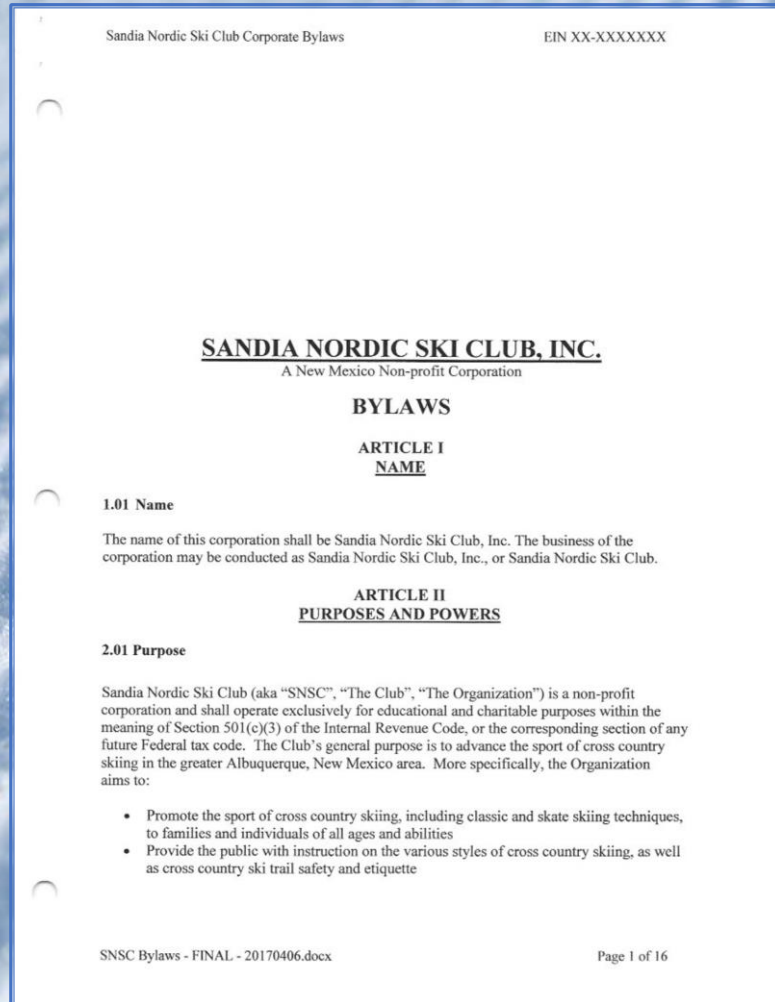
- Promote the sport of cross-country skiing, including classic and skate skiing techniques, to families and individuals of all ages and abilities ✓
- Provide the public with instruction on the various styles of cross-country skiing, as well as cross-country ski trail safety and etiquette and the health benefits associated with the sport ✓
- Promote and support youth and adult cross-country skiing competitions and community events ✓
- Purchase and maintain cross-country ski trail grooming equipment ✓
- To directly engage in and provide facilities for others to engage in the promotion of cross-country skiing, including classic and skate skiing techniques ✓
- Work in conjunction with the US Forest Service and other volunteer organizations to construct, maintain and provide the public with access to groomed cross-country ski trails in the Sandia Mountains of New Mexico ✓
- Partner with the USFS to help promote healthy forest management strategies and support environmental studies related to the potential impact of trail construction ✓

*Sandia Nordic Ski Club and FOSM:
Working Together to Serve Our Community*

*Shared Goals and Objectives
Opportunities for Collaboration*



FOSM and Sandia Nordic Bylaws – Common Goals



FOSM Bylaws - Article I, Section 1.2

New Mexico Friends of the Forest is a nonprofit corporation dedicated to working in partnership with the United States Forest Service and other groups and individuals to maintain, protect, and restore the natural, cultural, and scenic resources of New Mexico's forest lands for the enjoyment and use of present and future generations. Our focus is on conservation and education activities within the Sandia and Mountainair Ranger Districts of the Cibola National Forest and adjacent lands.

FOSM Website - About Us > What we do:

Conservation, education, restoration, site stewardship, wildlife and habitat monitoring, trail construction/maintenance, learning by doing, visitor services, fundraising

Common Areas of Focus Between FOSM and SNSC

Working Together to Serve Our Community

Description	FOSM	Sandia Nordic
Work in partnership with USFS	✓	✓
Maintain New Mexico forest lands for public's enjoyment	✓	✓
Provide public with educational activities	✓	✓
Construct and maintain trails	✓	✓
Promote and support conservation and healthy forest management strategies	✓	✓

Thank you!!!



Revenue by Season and Fiscal Year

Seasonal Revenue and Membership Data				
Description	2017-2018	2018-2019	2019-2020	2020-2021
Membership Fees	\$1,030.00	\$1,510.00	\$3,185.00	\$2,990.00
Donations	\$25,585.00	\$9,330.00	\$8,200.36	\$7,890.50
Total Reveue	\$26,615.00	\$10,840.00	\$11,385.36	\$10,880.50
% Revenue from Membership Fees	3.87%	13.93%	27.97%	27.48%
% Revenue from Donations	96.13%	86.07%	72.03%	72.52%
# Members	26	52	101	92
# Donors	31	79	42	35
Fiscal Year Data				
Description	FY 2017	FY 2018	FY 2019	FY2020
Membership Fees	\$1,030.00	\$645.00	\$3,245.00	\$2,975.00
Donations	\$17,910.00	\$12,375.00	\$10,180.36	\$9,605.00
Total Reveue	\$18,940.00	\$13,020.00	\$13,425.36	\$13,560.17
% Revenue from Membership Fees	5.44%	4.95%	24.17%	21.94%
% Revenue from Donations	94.56%	95.05%	75.83%	70.83%