



Albuquerque Mountain Bike Association (AMBA)

Outline

1. AMBA Overview
2. Board of Directors
3. Committees
4. Trails+ Grant
5. Q&A



Overview

- AMBA was established in 2015, building off of the former group, Friends of the Outdoors (FOO).
- AMBA is an International Mountain Bike Association (IMBA) Chapter, as well as being a 501(c)3.
- There are roughly 300 registered members, with 1,450 associated members on Meet-Up.



Overview

AMBA is a non-profit association whose mission is to create, enhance and preserve great trail experiences for mountain bikers in the greater Albuquerque area, and to create a bicycle friendly community through cycling awareness, safety, advocacy and promotion of bicycling for fun, fitness and transportation.

AMBA seeks to preserve, protect, and promote mountain bike access and diverse riding opportunities on NM's public and private lands through education, communication, and unified action.



Board of Directors

Hannah Russert
Mitch Steinberg
Jeremy Peterson
Carley Parriott
Rachel Bobka

Tami Taylor
Carlos Matutes
Zack Ratzlaff
Jay Wulf
Seth Bush



Committees

Membership & Marketing

Financial & Fundraising Strategies

Technology

Trail Development & Maintenance

Education

Events & Group Rides



Trails+ Grant - Overview

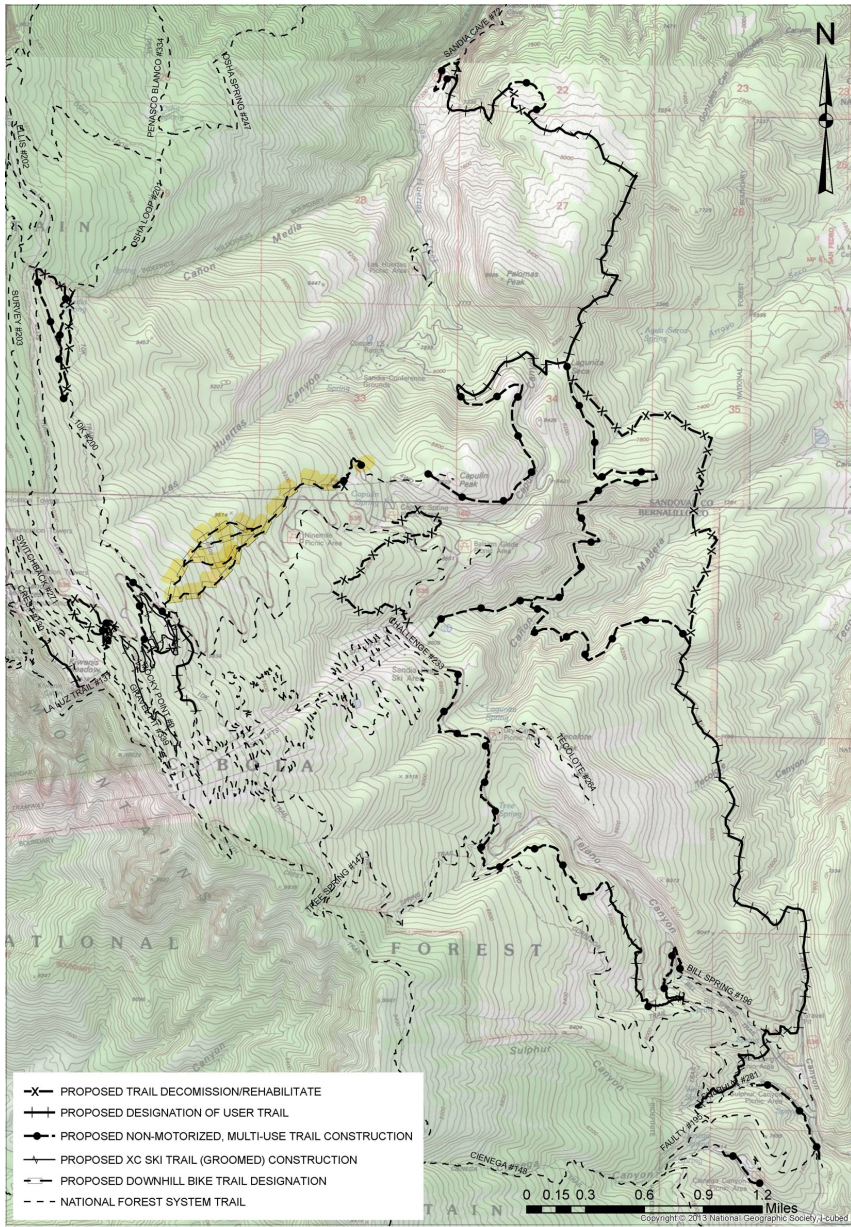
- This scalable project was scoped and approved in the USFS's April 2021 Sandia Trails Improvement Project
- Builds upon and improves the existing downhill designated mountain biking trails on the east side of the Sandia crest
- Utilizes a hybrid development approach, pairing machine and hand-built construction mechanisms, to create unrivaled progressive features, while maintaining the character and experience of the existing trails
 - Contractual agreements with both the USFS and Rocket Ramps are underway



Trails+ Grant - Result

- The proposed project will:
 - Improve the safety of nearby multi-use trails by creating a direction-specific trail system (reducing the potential for hiker-biker collisions)
 - Increase access for downhill-oriented riders
 - Support sustainable trail use by mountain bikers of all levels
- The trail system will be composed of direction-specific, single-use trails purpose-built for downhill biking.

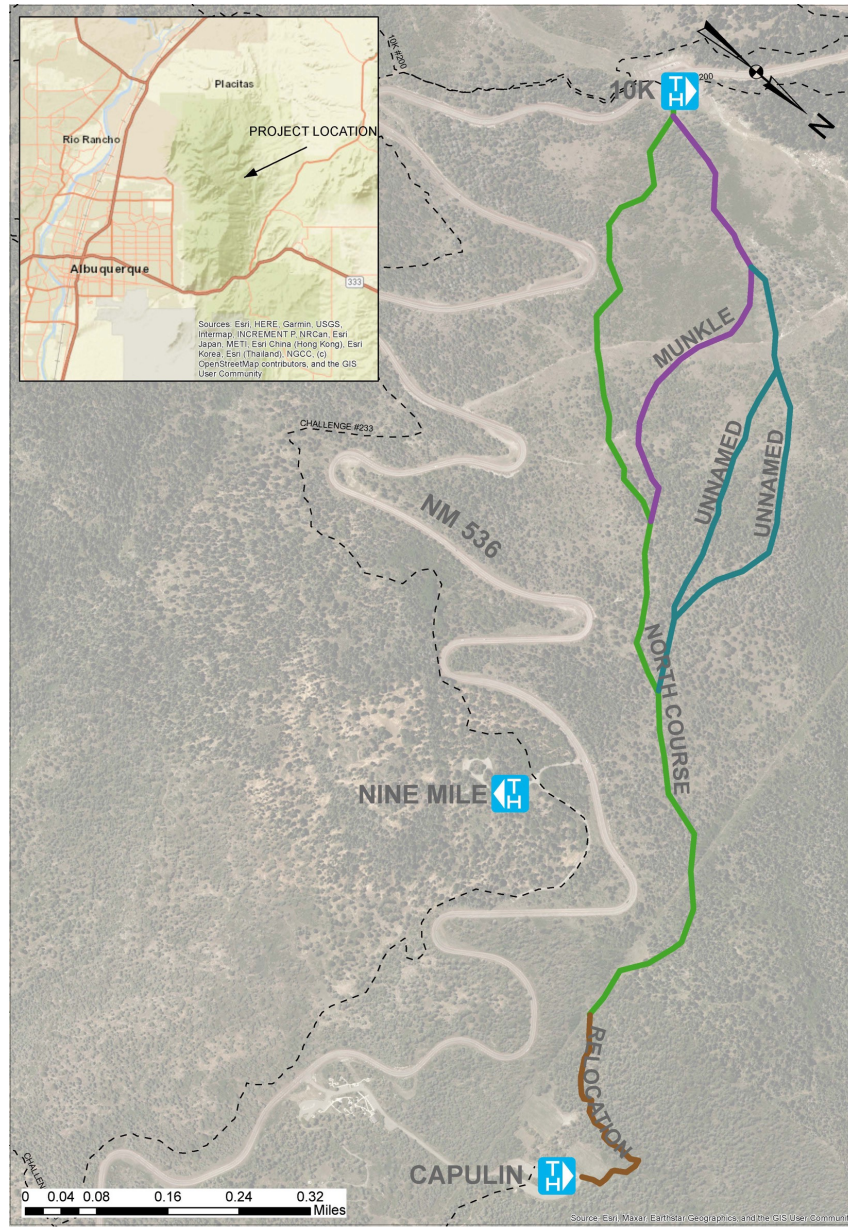




SANDIA TRAILS IMPROVEMENTS PROJECT

MAP 3 OF 5 NAD 83 1:25,000

The Cibola National Forest uses the most current database available. Updates occur as new information becomes available. No warranties are made regarding the accuracy of these data.



SANDIA DOWNHILL TRAILS PROJECT

DOWNHILL MOUNTAIN BIKE TRAILS
 NAD '83 - 1:5,500

The Cibola National Forest uses the most current database available. Updates occur as new information becomes available. No warranties are made regarding the accuracy of these data.



Other Topics..

- Enduro Race Series
 - Open Forum/Meeting – May
 - Winter 2023 Trail Work @ South Foothills
-
- Questions?

