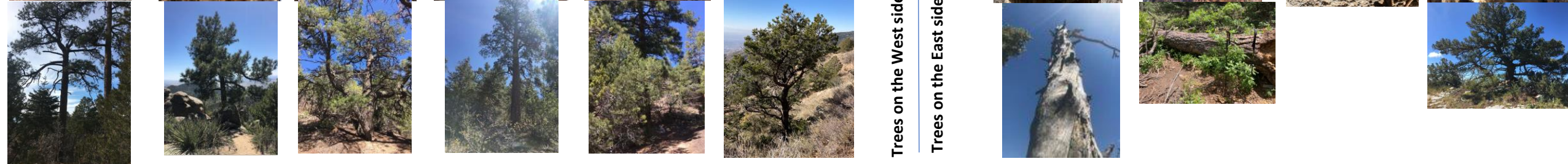


# Medallions and Marks of the Sandias

Jamey Browning

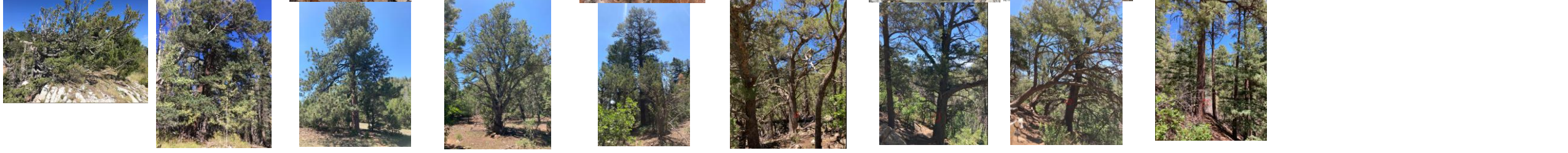
9/13/2023





Trees on the West side of the Sandias.

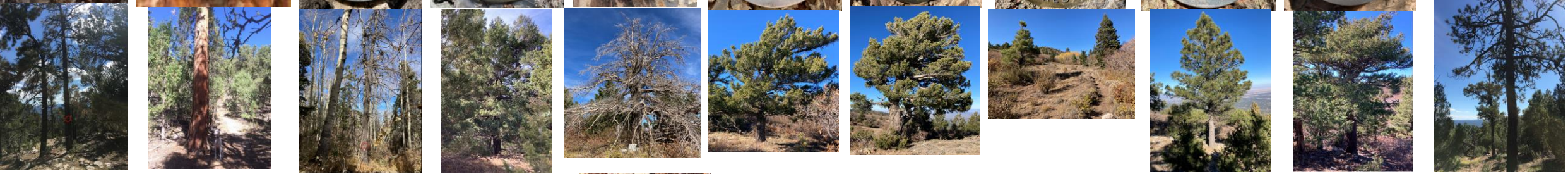
Trees on the East side of the Sandias.













Trees on the West side of the Sandias.

Oliver Wendell Holmes Jr. Tree, The Great Dissenter 1841 - 1935, GD~1841, Pinyon Pine 1999 Data Tree, TB4, TB~1933

Pinion. P. T. Barnum Birth Tree GD~1810 TB3

The Robinson Crusoe Tree, Rescue of A. Selkirk inspired Defoe's novel, GD~1709, Ponderosa Pine, 2000 Data, Tree 91

Elizabeth I Birth Tree, GD~1533, Ponderosa 1999 Data Tree 78, Queen of England, 1558-1603

Ponderosa. Theory of Gravitation Tree, GD~1684, #93

James Monroe 5th Pres, GD~1817, TB~1966

California 31st State, GD~1850, TB~1966 TB2

TWA Flight 260 Crash Site, 19 Feb 1955, Martin 404, 0 Survivors, 16 Died

Galileo's Death Tree, GD~1642, #129

USAC Northrop A-17 Crash Site, 17 Nov 1941, In Memory Of:, Lt Seldon T. Miller, Staff Sgt Howard L. Miller

Pueblo Indian Revolt Tree, GD~1680, #132

English Window Tax Tree, GD~1695, #102

Boston Massacre Tree, GD~1770, #103

Espejo Expedition Tree, GD~1582, #128

Plymouth Rock Tree, GD~1620, #104

Pennsylvania 2nd State Tree, TB22, GD~1787

Queen Victoria Crowned, GD~1837, #ME1. Heavy shrubs. Only approach is from north.

Trees on the East side of the Sandias.

1st Frankfurter Tree, DD ~ 1963, GD ~ 1652, TB17.

Brooklyn Bridge Tree, GD ~ 1883, TB ~ 1964, TB16

Medallion near North Sandia Peak. U.S. DEPARTMENT OF AGRICULTUREFOREST SERVICE 250 DOLLAR FIND FOR DISTURBING THIS MARK 19

1st Romanov Russian Tsar Tree, GD`1613, #81

Charles I King of England Tree, GD~1625, #82

Start Wars of the Roses, GD~1455, Douglas Fir, 2000 Data, Tree 69

Mississippi 20th State Tree GD~1817 TB~1963 TB 19

Mormon Church Tree, GD~1830, TB~1922, TB18

Deerfield Massacre Tree GD ~1704, #124.

Anne Boleyn Beheaded Tree, GD~1536, #99.

Bloody Mary Tree, GD~1553, Pinyon Pine, 1999 Data, Tree 44.

Edward VI King of England Tree, Mid Reign, Pinyon Pine, GD~1556, 1999 Data, Tree 43.

Grimms Fairy Tales Tree, GD~1812, #126.

FOREST SERVICE DEPARTMENT OF AGRICULTURE100 YEARS OF CARING FOR THE LAND AND SERVING PEOPLE CR3A1905 - 2005

"SANDIA 1945GEODETIC SURVEY AZIMUTH MARK. FOR INFORMATION WRITE TO THE DIRECTOR, WASHINGTON D.C. \$250 FINE OR IMPRISONMENT FOR DISTURBING THIS MARK . "

Santa Fe Trail Tree, GD~1821, #1

Erie Canal-Start Const Tree, GD~1817, #49

First US Census Tree, GD~1790, #25

Grand Central Station Tree, GD~1913, #26

1st Balloon Flight Tree, GD~1783, #24

"Delaware 1st State Tree, GD~1787, DD~1996, #4 Hidden under a rock.

Statue of Liberty Tree, GD~1885, #8

Ohm's Law Tree, GD~1827, #9

Yellowstone N.P. Tree, GD~1872, #27

Appomattox Tree, GD~1865,Douglas Fir, 1998 Data,Tree 10, Lee Surrenders to Grant

"U.S. Grant Birth Tree, GD~1822, #16"

First Mint Tree GD~1791, #17

Lewis & Clark Tree, GD~1804,#14

Wells Fargo & Co Tree, GD~1852, Douglas Fir, 1998 Data, Tree 15

1st UNM Classes Tree, GD~1892, #131

Custer's Last Stand Tree, GD~1876, #130

Hudson Bay Co Tree #20, GD~1670

Binomial Theorem Tree #7, GD~1663

Marie Antoinette Death #23, GD~1793

Lorenzo Log Water Trough #22, GD~1630, DD~1920. Small One inch diameter medallion on an old water trough located in Lorenzo Canyon.

Polarization of Light Tree, GD~1678, #40

Stamp Act Tree GD~1765 #41

French & Indian War Tree, GD~1757, #42

George Washington Birth Tree, GD~1732, LS~1957, #107 Fell 2020; Tip points towards trail. Medallion moved to N. side.

Capt Kidd Hanged Tree, GD~1701, #66

King Henry VI Tree, GD~1422, #33

Phosphorous Tree, GD~1669, #63

Coronado Expedition Tree, GD~1541, #32

Red Corpuscle Tree, GD~1668, #64

First Performance of Hamlet Tree, GD~1601, Pinyon Pine, 1998 Data, Tree 12

Mozart's First Symphony Tree, GD~1764, #13

Leonardo Da Vinci Birth Tree #61, GD~1452, DD~1943

Massachusetts Colony Tree, GD~1629, #60

Grover Cleveland 22nd Pres Tree, GD ~1885, #59

End Holy Roman Empire, GD~1806, TB~1951, TB6

Hershey Chocolate Tree, GD~1857, TB~1954, TB5

Thomas Jefferson 3rd President Tree, GD~1801, Douglas Fir, 1999 Data, Tree 51

N.Y. Stock Exchange Tree, GD~1792, Douglas Fir, 1999 Data, Tree 50

Vulcanized Rubber Tree, GD~1844, #37. Douglas Fir. 126' W. of Lonesome Pine.

Lonesome Pine, GD~1762, Douglas Fir, 1998 Data, Tree 35.

Deer Peak Vertical Angle Bench Mark. Medallion near South Sandia Peak USDA Forest Service Marker Survey Disk, Set in rock outcrop. Located on top of the first bald peak S. of South Sandia Peak. Monumented 1952. NAD83(1992)- 35 06 50.77751(N) 106 25 43.27643(W). Heavy oak shrubs. Approach either from North or SE. [https://www.geocaching.com/mark/datasheet.aspx?PID=FO1005"](https://www.geocaching.com/mark/datasheet.aspx?PID=FO1005)

Alaska 49th State Tree, GD~1959, #58

Canterbury Tails Tree, GD~1387, #12760' east of a meadow. Approach either from old S Crest Trail or junction of S. Crest Trail and Embudito.

Paul Revere's Ride Tree, GD~1774, TB10

Ohio 17th State Tree, GD~1803, TB~1960, TB9. MEDALLION STOLEN but nail is still in tree.

Boston Tea Party Tree, GD~1773, TB8. Don Diego De Vargas Tree, GD~1693, Ponderosa 1998 Data, Tree 38

1st Fountain Pen Tree, GD~1780, #57

4th of July Tree, GC~1776, DD=1999, #56

End Fr & Ind War Tree, GD~1763, DD~1939. Dead log on ground.

Joan of Arc Birth Tree, GD~1413, Pinyon Pine, Y2000 Data, Tree 86

Robert II Crowned King of Scotland, Grandson of Robert the Bruce, GD~1371, Pinyon Pine, 2000 Data, TREE 85. "Ben Franklin's Kite Tree, GD~1752, TB~1928, TB7.

Dead log DD~1953, TB~1938, GD~1696, TB 11 (Peter the Great becomes Tsar in 1696).

William Penn Birth Tree, GD~1644, TB~1938, TB12

Huygens Manometer Tree, GD~1661, TB~1938, TB13

Medallions are ordered north to south.

**Total:** 88 including 82 medallion trees plus TWA and Northrop plane crash site medallion trees, two USDA bench marks, the Forest Service 100<sup>th</sup> Anniversary marker, and Deer Peak geodetic survey mark.