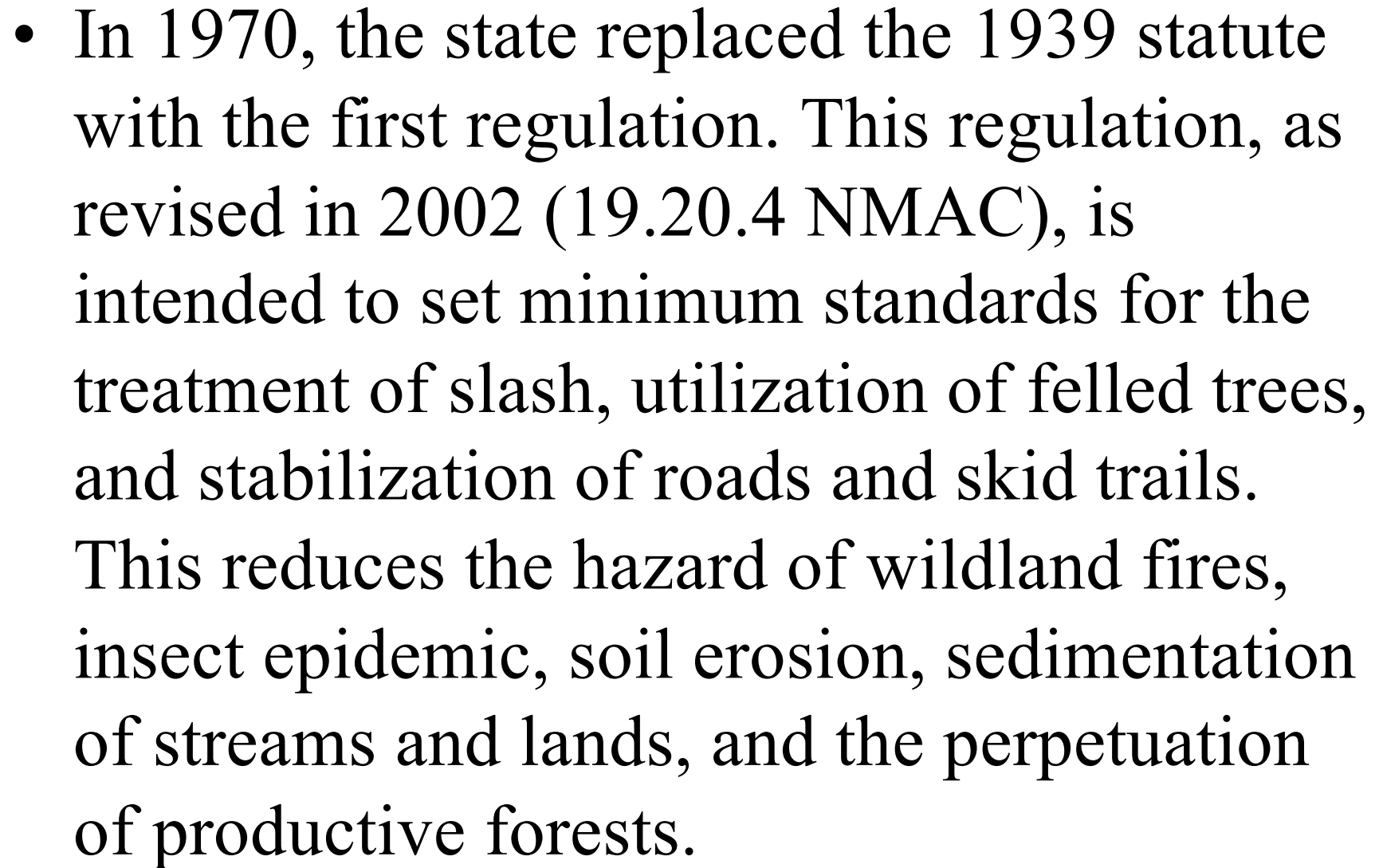


- So, who am I?
- Forestry degree from NAU -1984
- Wildland fire fighter for USFS -1980-1986
- Timber Supplier Manager from -1986-2003
- **Evacuee of the Cerro Grande fire with a 9-month pregnant wife and a pet -2000**
- Wildland fire fighter 2004 to present
- Engine Boss and Planning Section Chief 3 qualified
- Program manager for federal funds for thinning 2004 to present.



Forest Regulations

- Starting in 1939, New Mexico's Legislature recognized that the application of poor harvesting practices on private lands created long term impacts on our water quality, wildlife, and the economic stability of surrounding communities. The results of poor practices were large destructive wildfires, epidemic insect infestations, and sedimentation of streams and lakes.

- 
- In 1970, the state replaced the 1939 statute with the first regulation. This regulation, as revised in 2002 (19.20.4 NMAC), is intended to set minimum standards for the treatment of slash, utilization of felled trees, and stabilization of roads and skid trails. This reduces the hazard of wildland fires, insect epidemic, soil erosion, sedimentation of streams and lands, and the perpetuation of productive forests.

emnrd.nm.gov/sfd/

emnrd
Energy, Minerals and Natural Resources Department

Home About Contact News Public Notices Publications Search

INDUSTRY OVERSIGHT NATURAL RESOURCE MANAGEMENT CLIMATE CHANGE STATE PARKS PROGRAMS & SERVICES EXPLORE BY DIVISION

Forestry Home

Home


Explore Forestry Division

- Forestry Home
- Program Info
- News
- Public Meetings & Hearings
- Statutes
- Contact Us

The New Mexico Forestry Division

The New Mexico Energy, Minerals and Natural Resources Department (EMNRD) Forestry Division was created in 1957 to address the critical needs of our state's forests and watersheds. In the early years, the Forestry Division focused on regulating timber sales and extinguishing wildfires.

Today, the work has expanded to reducing the overgrown trees and brush that act as fuel for future wildfires, identifying invasive insects and epidemics of native insects that lead to



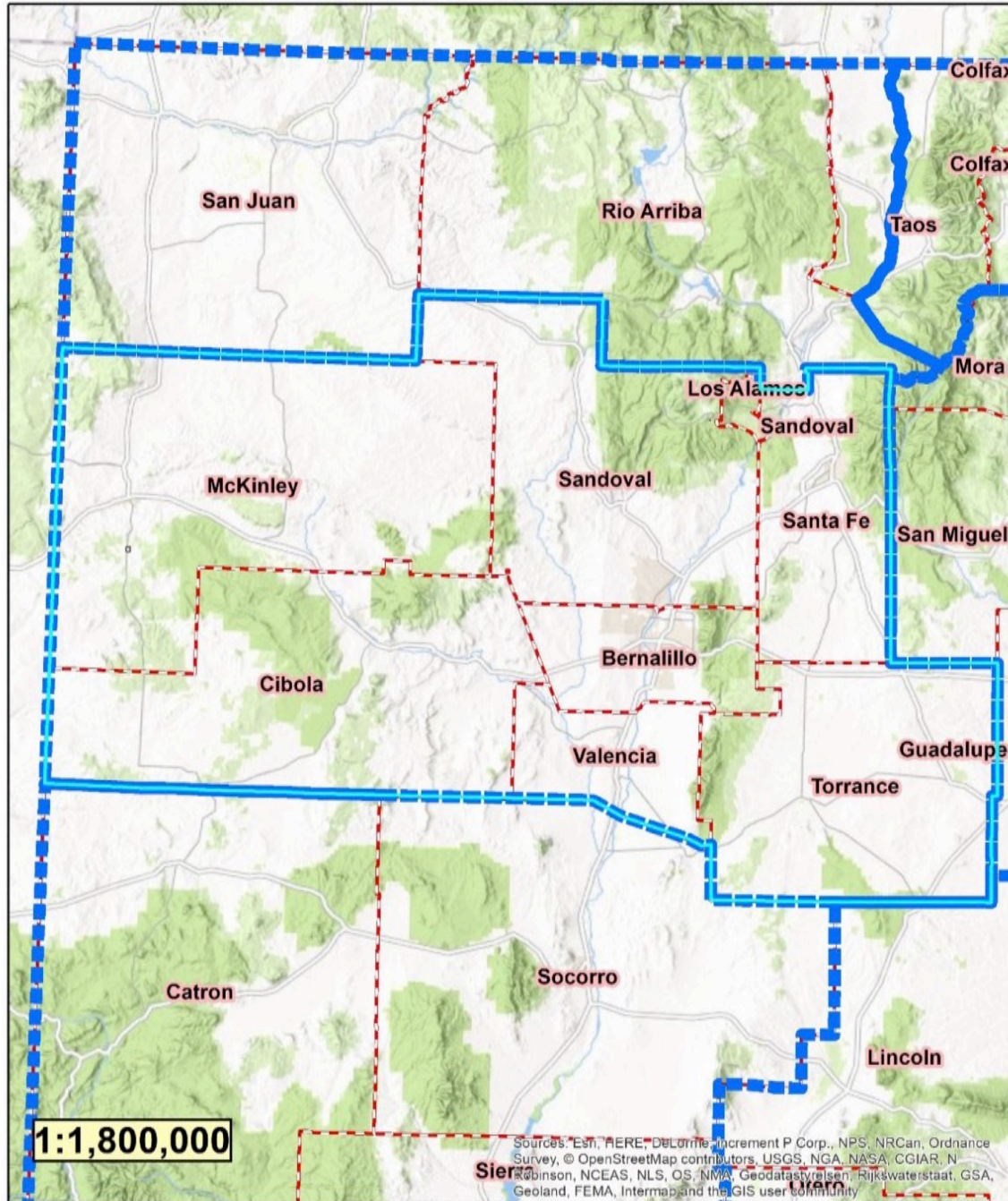
<https://www.emnrd.nm.gov/sfd/>

Mission

- The New Mexico Forestry Division retains lead responsibility for wildland fire management on all non-federal, non-tribal, and non-municipal lands, maintaining fire suppression capacities and emphasizing public and firefighters' safety. The Forestry Division promotes healthy, sustainable forests and watersheds in New Mexico for the benefit of current and future generations.

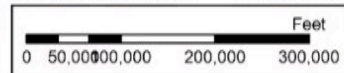
- Laura McCarthy is the 11th State Forester and the first woman to take on the role since joining the New Mexico Forestry Division in 2019. Ms. McCarthy holds a master's degree from the Yale School of Forestry and the Environment. She started her career as a wildland firefighter for the USDA Forest Service and later transitioned through forestry-related positions with the Forest Trust and Forest Stewards Guild. Ms. McCarthy most recently served as the Nature Conservancy's Senior Policy Advisor for Forest and Fire Management and as associate state director for the Nature Conservancy's New Mexico office.



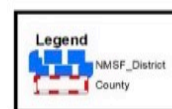


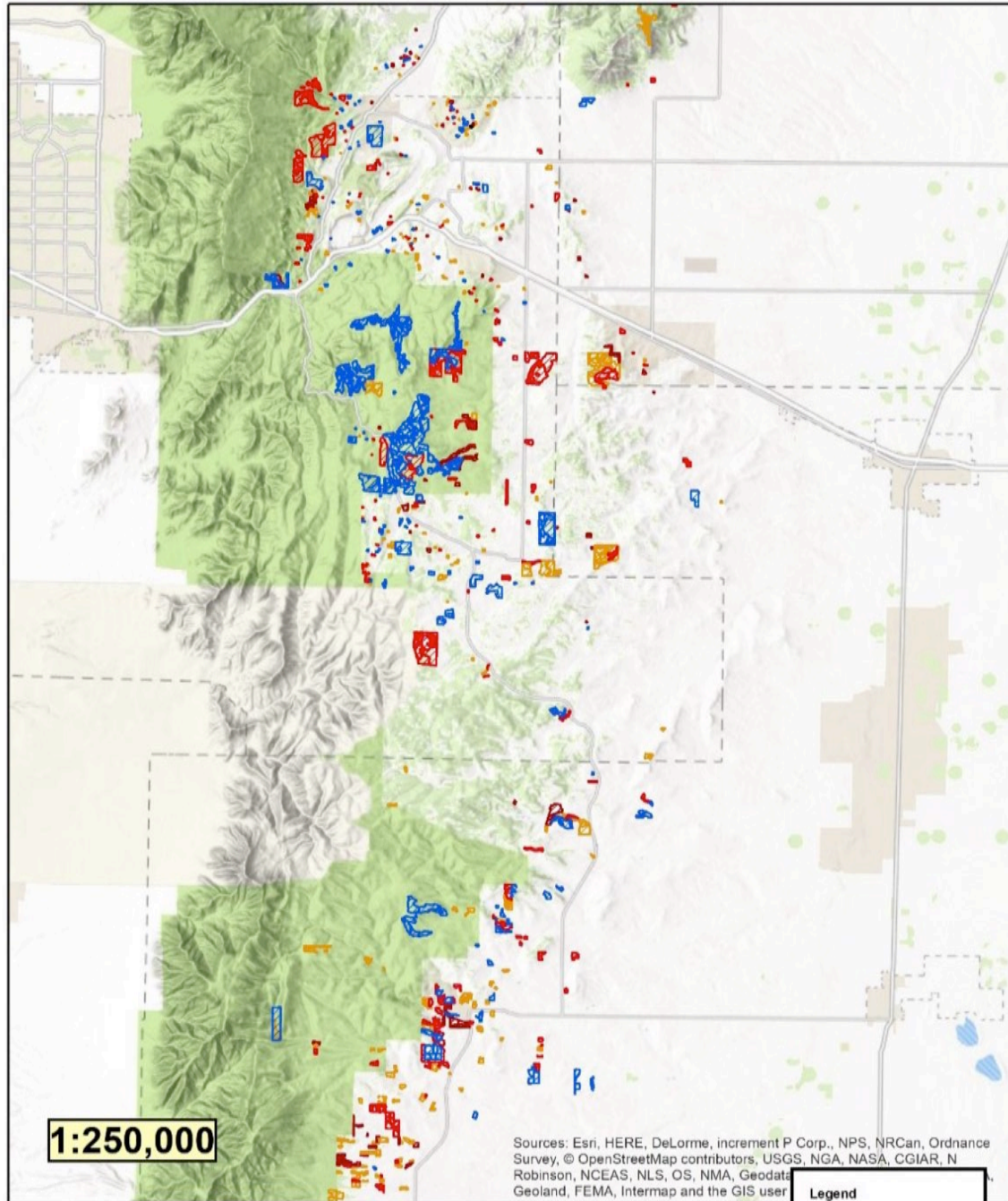
Georeferenced Map Map Created by L.R.Crane

Date: 8/6/2024 Time: 5:30:38 PM



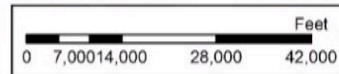
Datum: NAD83 Projection: UTM Zone 13N
 No warranties are made regarding the accuracy of this data.
 Produced by NIM EMNRD Forestry Division,
 Timber Forester





Georeferenced Map Map Created by L.R.Crane

Date: 8/6/2024 Time: 5:20:12 PM



Datum: NAD83 Projection: UTM Zone 13N
 No warranties are made regarding the accuracy of this data.
 Produced by NIM EMNRD Forestry Division,
 Timber Forester

| Legend | |
|----------|------------------------|
| inspyear | |
| | -999.000000 - 0.000000 |
| | 0.000001 - 8.000000 |
| | 8.000001 - 12.000000 |
| | 12.000001 - 17.000000 |
| | 17.000001 - 24.000000 |

[Click to view embedded video](#)

Grass fire flame lengths



Quick change in fire behavior



**Ponderosa Pine
Flame Lengths**



Single Tree Torching

Steep Slopes Cause Rapid Fire Spread

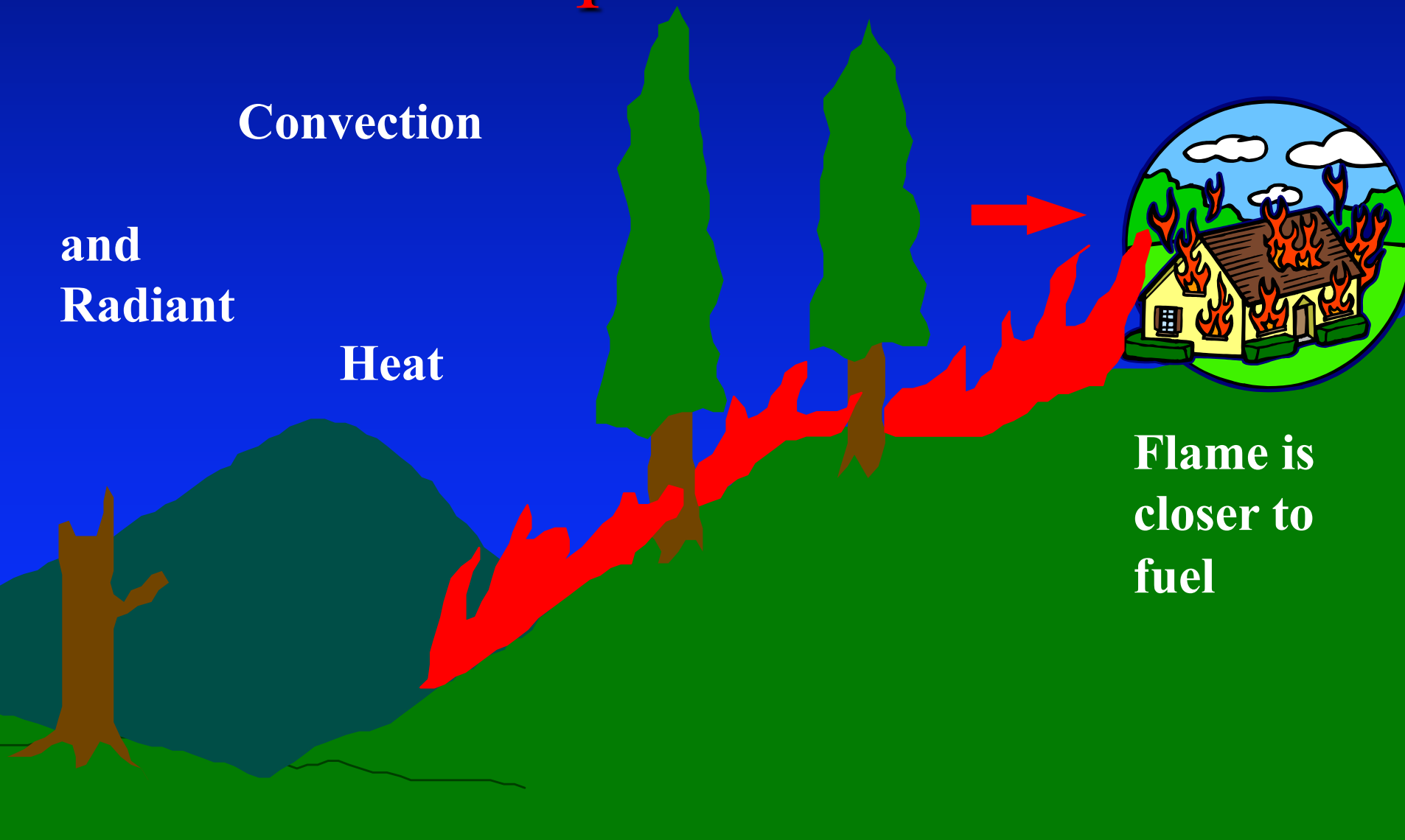
Convection

and
Radiant

Heat



Flame is
closer to
fuel



Topography

- **Fire spread increases with steepness of slope**

Slope Affects Defense



ip
for your map.



ency

700 ft



Home prior to thinning and a prescribed fire.



- **A homes survivability is not guaranteed!**





Trigo Progression



We Can Improve Forest Health.



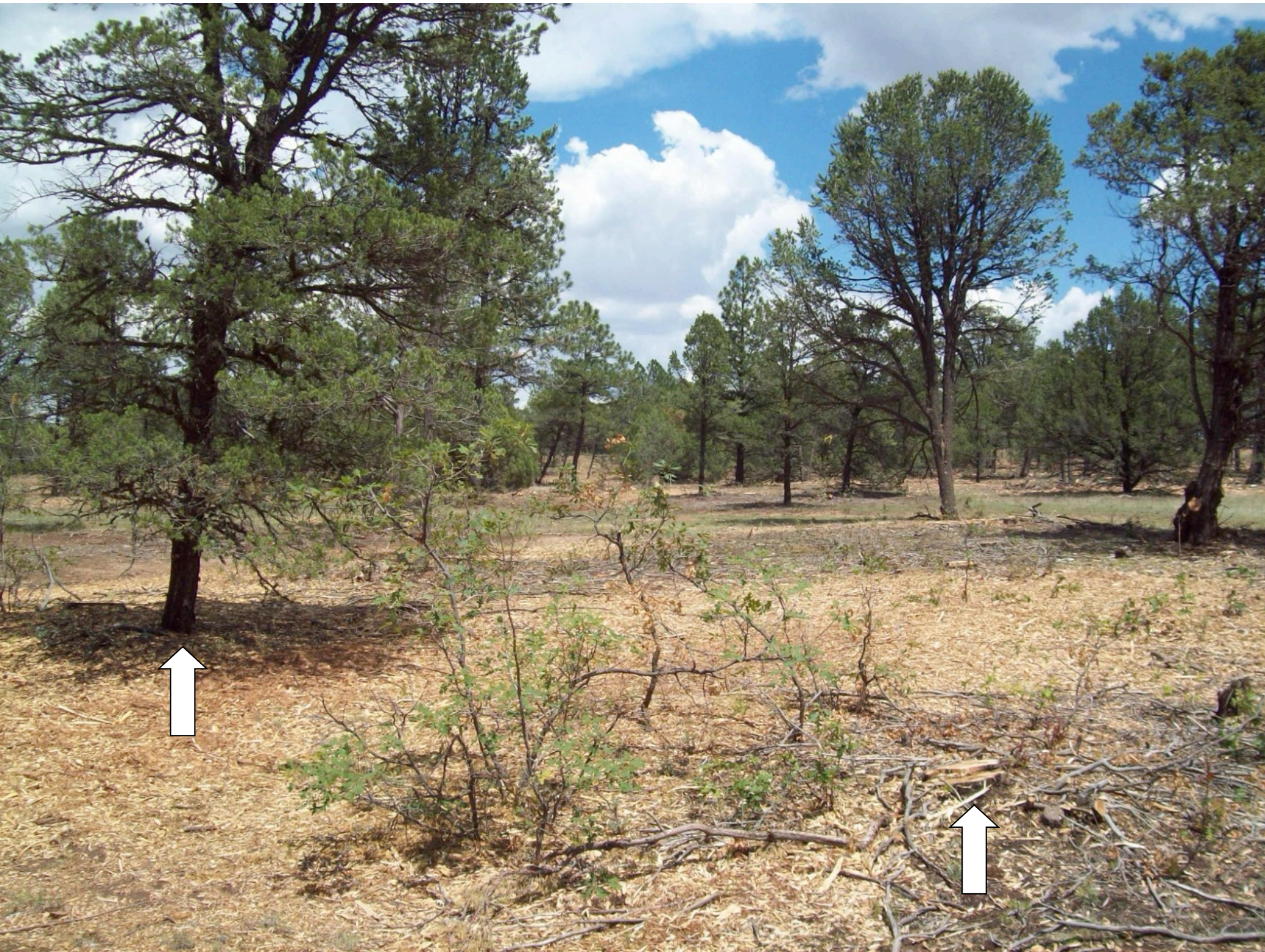












Fuel Arrangement

Patchy

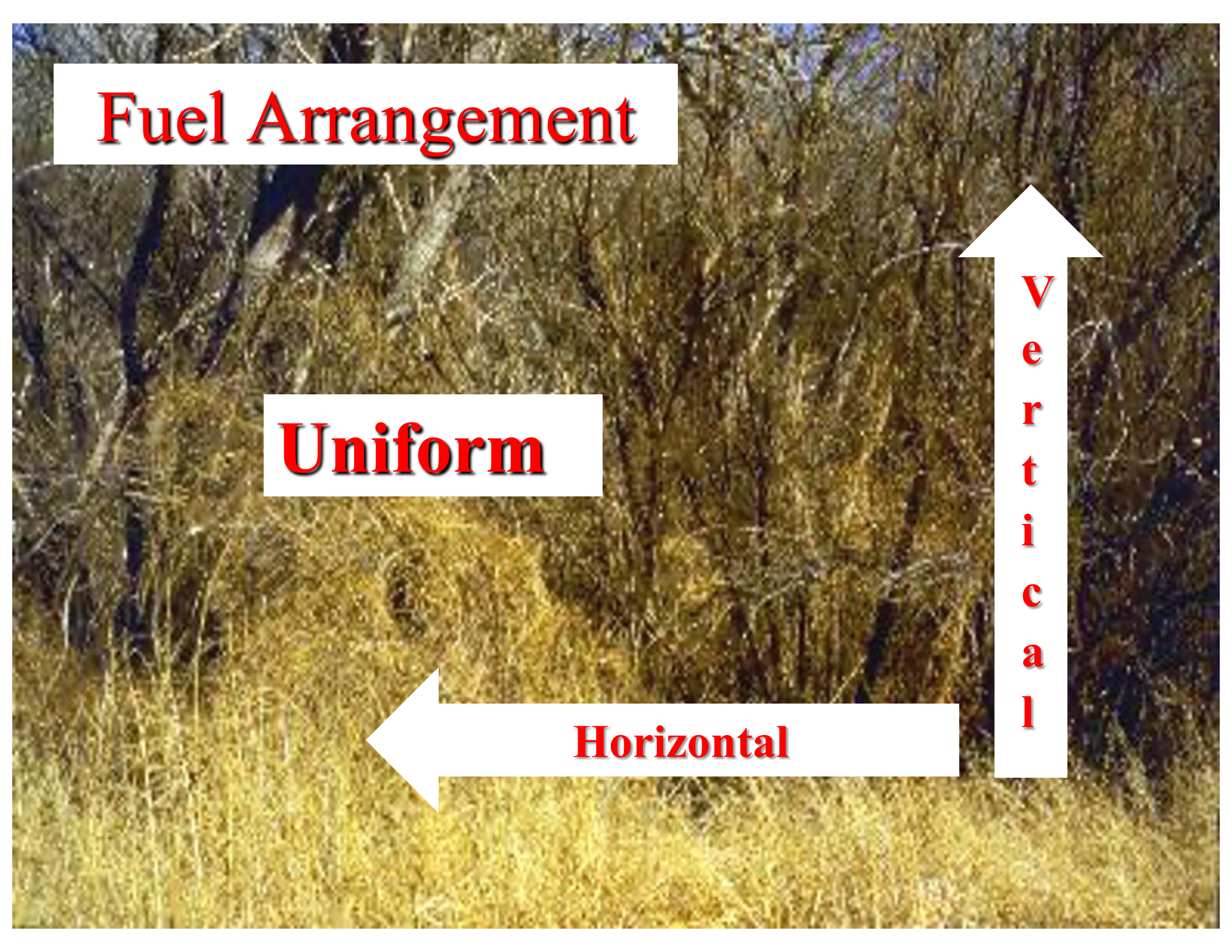


Fuel Arrangement

Uniform

Horizontal

**v
e
r
t
i
c
a
l**



An aerial photograph showing a residential area with a significant portion of the landscape charred and blackened, likely from a wildfire. The charred area is irregular and dark, contrasting with the surrounding green trees and brownish ground. A road runs through the middle of the scene, with a white house on the right side. In the foreground, there are several houses, some with brown roofs and others with white walls. The overall scene is a mix of green, brown, and black, illustrating the impact of a wildfire on a residential area.

Uniform

Patchy



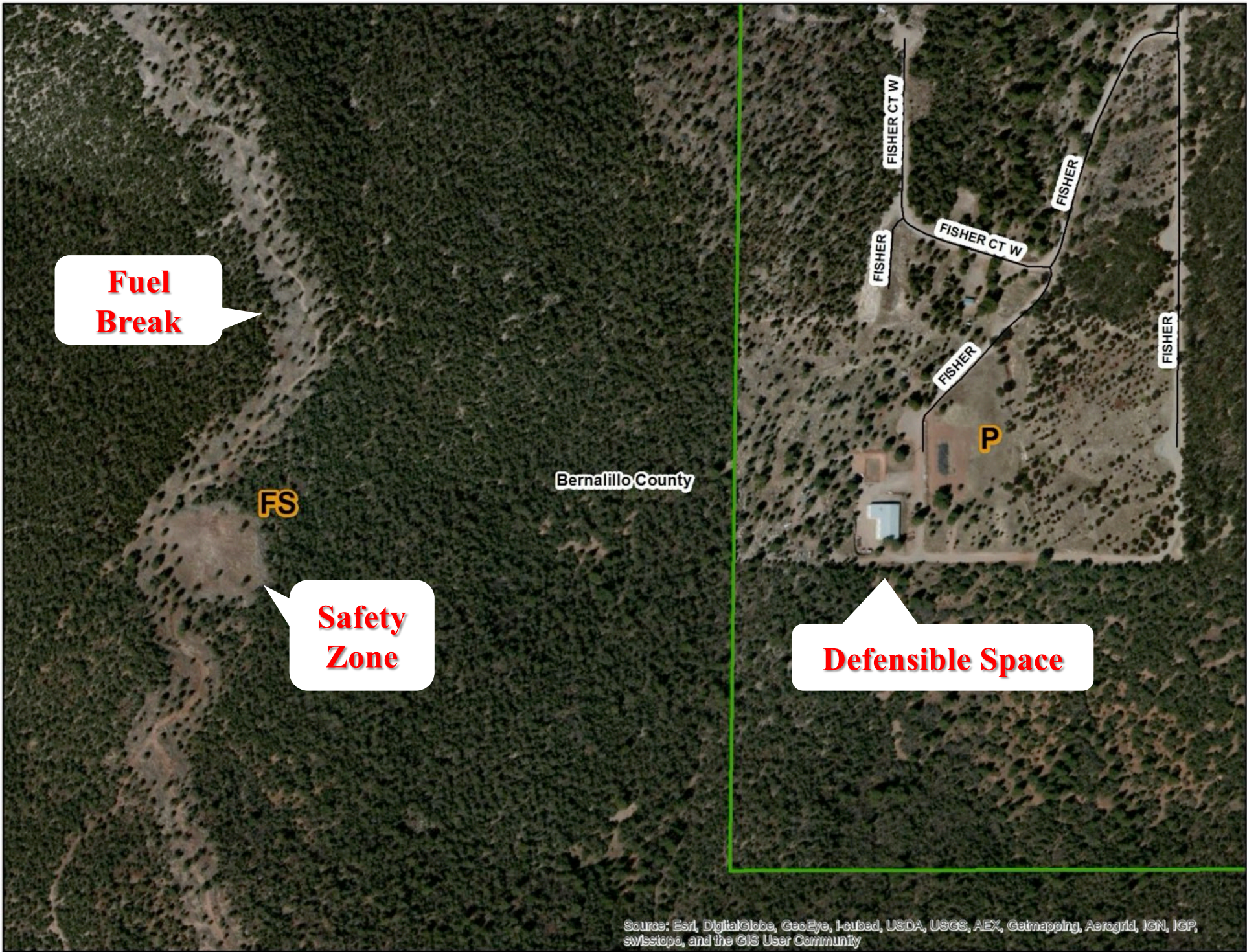
Its There home as well



08.15.2009 16:15



08.15.2009 11:05



**Fuel
Break**

FS

**Safety
Zone**

Bernalillo County

Defensible Space

P

FISHER CT W

FISHER

FISHER CT W

FISHER

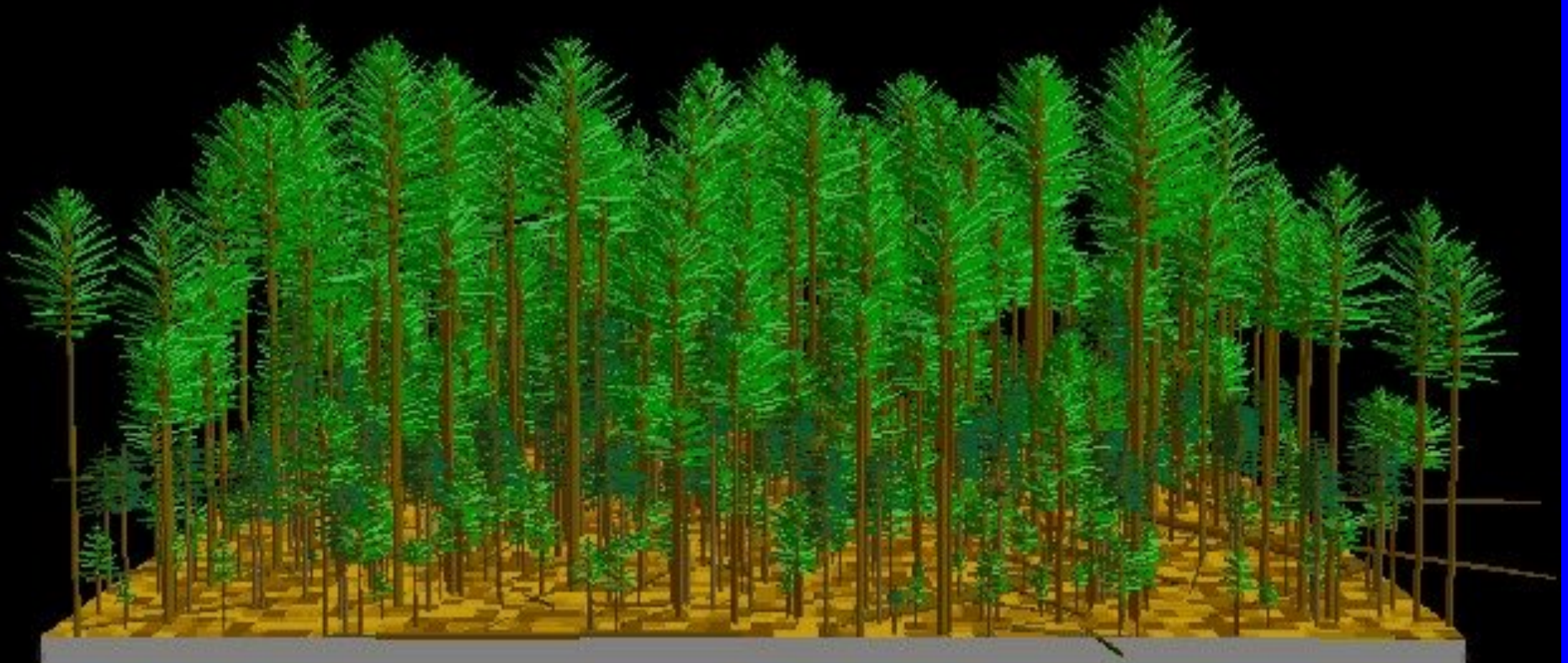
FISHER

FISHER

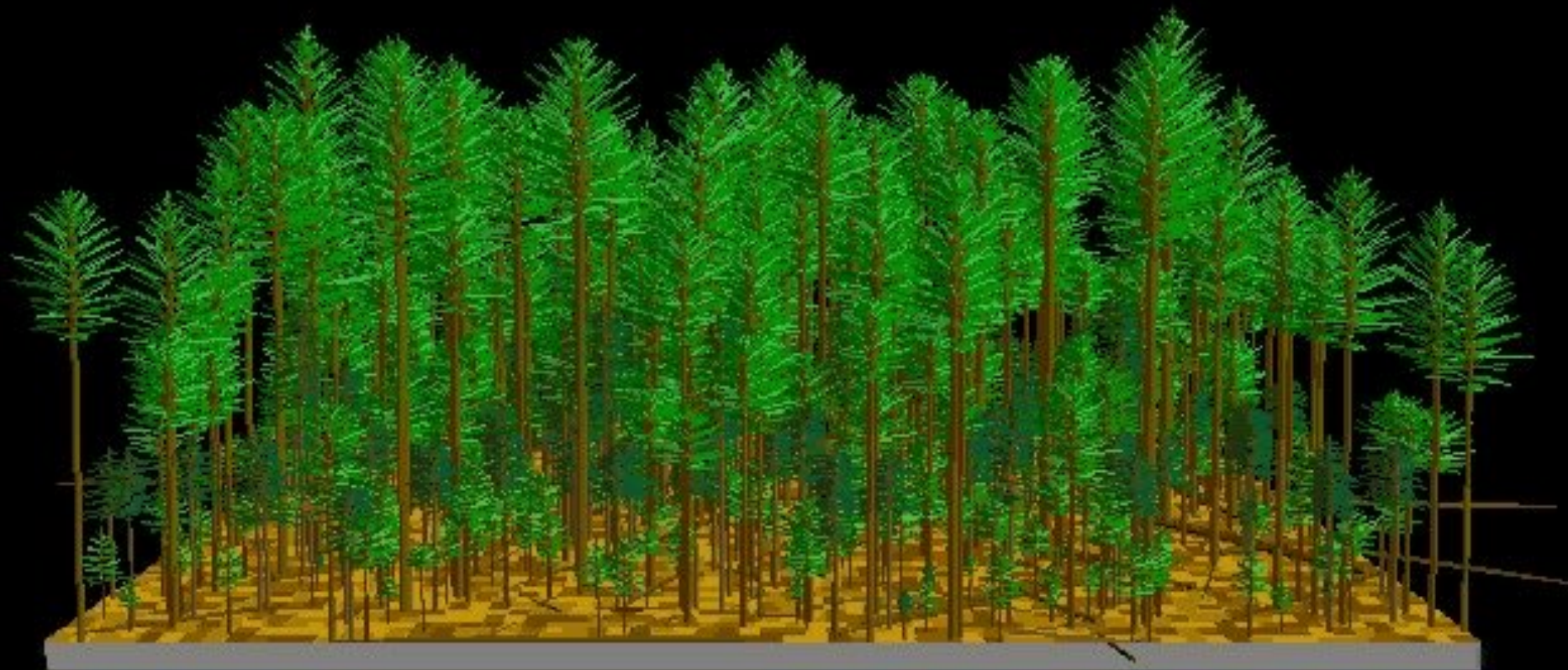


08.15.2009 19:37

[Click to view embedded video](#)



[Click to view embedded video](#)



A photograph of a healthy forest. The scene is dominated by tall, slender pine trees with dense green needles. The ground is covered in a mix of green grass and brown pine needles. Several tree stumps and fallen logs are scattered across the forest floor, indicating a natural cycle of growth and decay. The sky is overcast, and the overall atmosphere is serene and natural.

A Healthy Forest

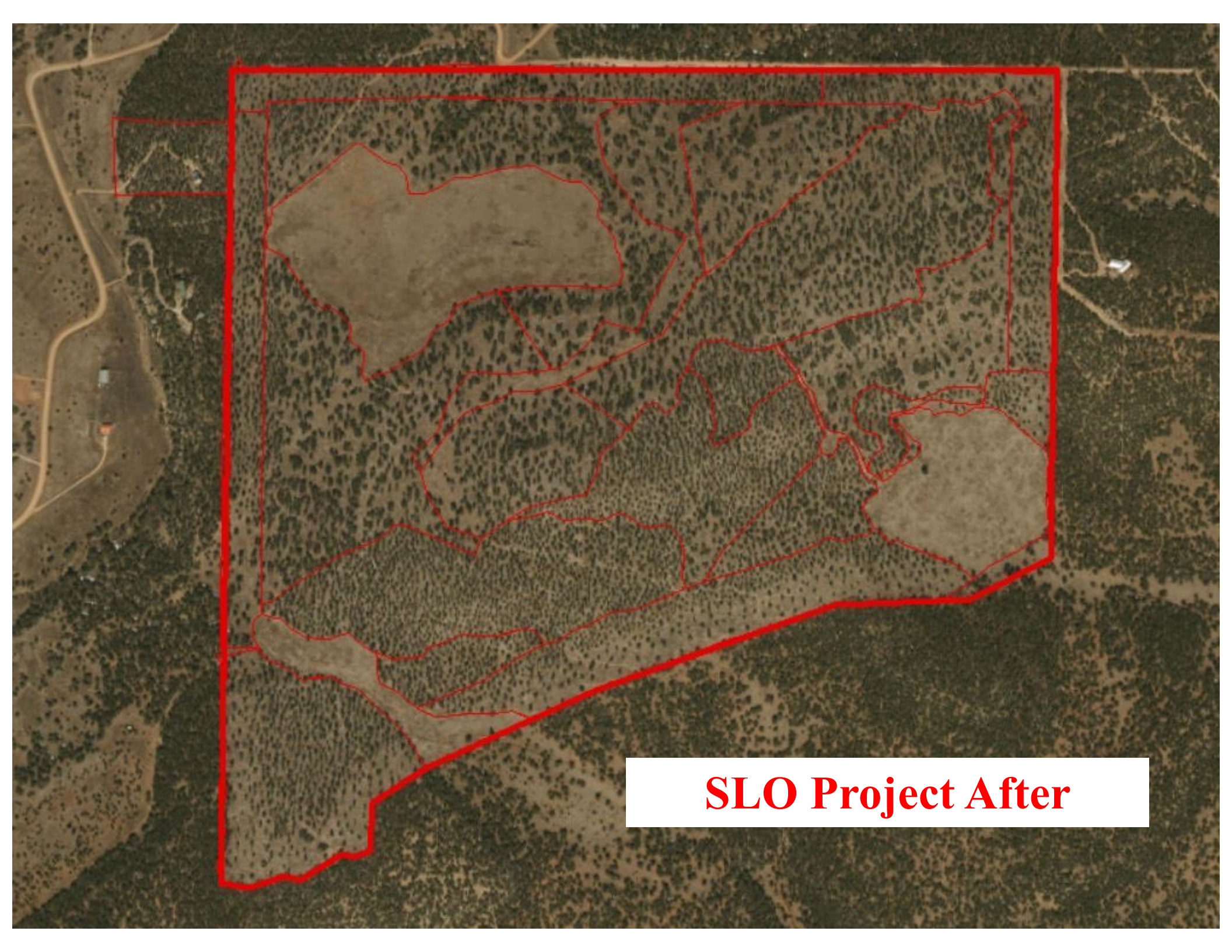


SLO Project Before

Source: Esri, DigitalGlobe, GeoEye, i-cubed, USDA, USGS, AEX, Getmapping, Aerogrid, IGN, IGP, Swisstopo, and the GIS User Community



SLO Project Midway



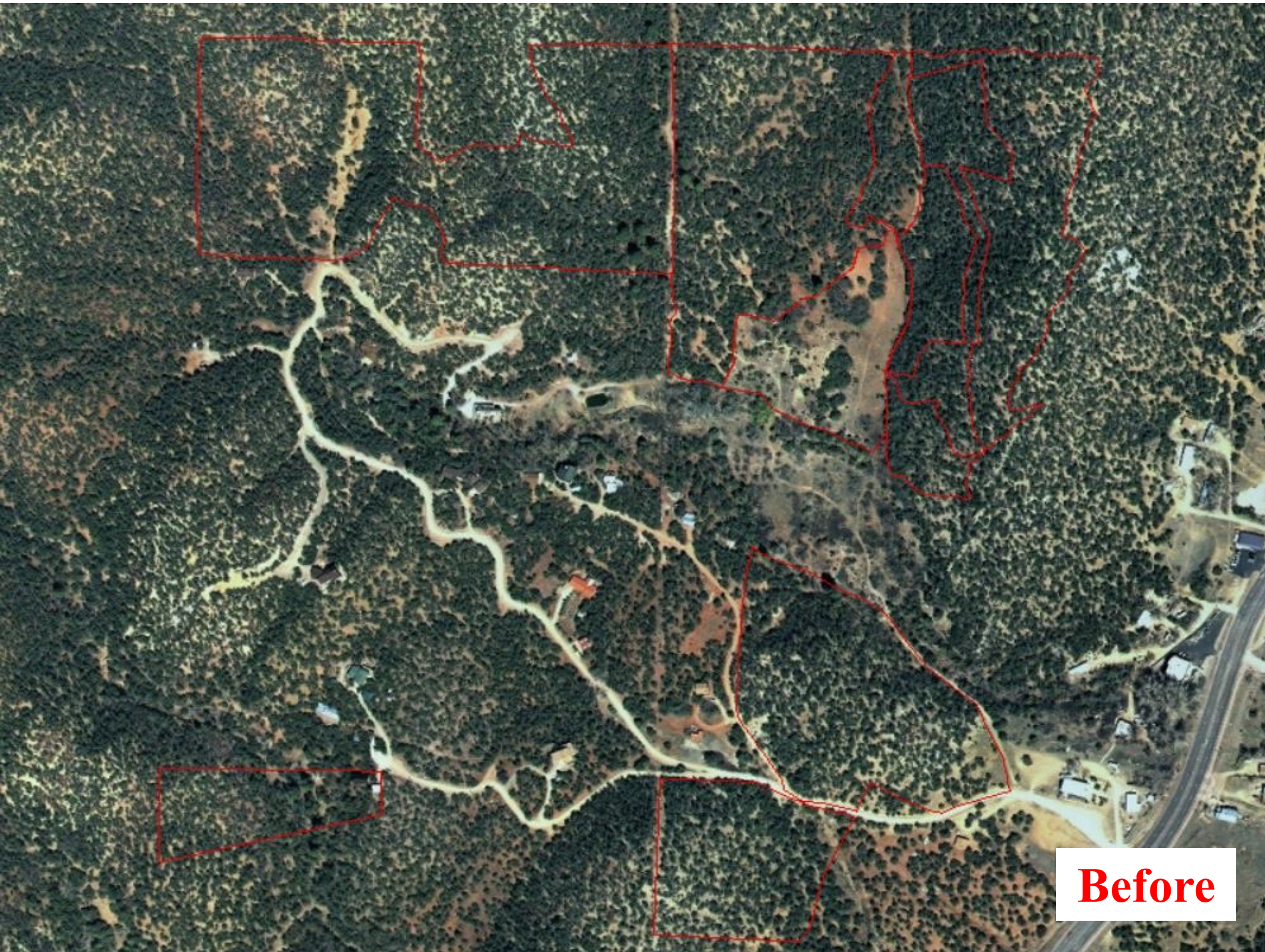
SLO Project After

SLO Project Before



SLO Project After





Before



After

A photograph of a dry, sandy landscape. The foreground is filled with sparse, dry, brownish vegetation and patches of light-colored sand. In the middle ground, there is a line of trees, including several tall, dark green pine trees. The sky is a clear, bright blue. The overall scene suggests a semi-arid or desert environment.

Other acceptable uses of Juniper Slash only



A photograph of a dirt path in a wooded area. The path is made of light brown soil and is bordered by tall grasses and dense green brush. Several large, dark logs are stacked along the path, likely used for erosion control. The background is filled with tall pine trees under a clear blue sky.

Protect the Banks of Water Crossings.





New Mexico Fire Information

EMNRD



STATE FORESTRY