

N. M. Cross Country Ski Club

Presentation for FOSM, Sept. 3, 2024

Sam Beard

History

- A. Originally organized as N. M. Ski Touring Club in 1970
- B. Later renamed N. M. Cross Country Ski Club

Activities Led By Volunteers

- A. Local outings in Sandia and Jemez Mountains
- B. Long car trips -- Chama/Cumbres Pass & Red River/Enchanted Forest
- C. Long bus trips to southern and central Colorado
- D. Instruction – Beginning, intermediate, and Telemark skiing
- E. Trail planning, clearing & maintenance
- F. Member trips to Yellowstone NP and Canada

History of Trails Skied by NMCCSC

- In 1960s in SRD and JRD, skied hiking trails & unplowed USFS roads. (Service Road and Kiwanis Meadow Road)
- After 1970, Club cleared buried cable and survey rights of way. (Buried Cable Trail and Survey Trail)
- Later, planned XC ski trails with proper slopes.(Challenge, Switchback, Gravel Pit, and Rocky Point Trails)
- Eventually, XC trails became multi-use. (Snowshoers, hikers, mountain bikers, and horseback riders)
- Some trails extended & rerouted. (Challenge Trail extended from 4 miles and 1700 ft elevation change to 10 miles and 3000 ft elevation change)

Trails Developed and Maintained

A. Sandia Mountains – Buried Cable, Survey, Switchback, Gravel Pit, Rocky Point and Challenge (Now maintained year-round in cooperation with FOSM)

B. Jemez Mountains – Redondo CG Loop, Twin Craters, Crater Spur, Ladera, Elk Ridge, East Fork Ridge, East Fork East Loop, Burn, Calzada, Corral Canyon, and Mistletoe Canyon

Comparison of NMCCSC with SNSC (Sandia Nordic Ski Club)

New Mexico Cross Country Ski Club (NMCCSC)

- Back country classic skiing (kick and glide) with tracks set by skiers
- Trails cleared by moving logs, pruning branches and felling only small trees
- Trail tread formed slowly by hikers and wildlife usage (No dug trail tread)
- Trail corridors as narrow as a few feet – just wide enough for skiers to pass
- Skiers follow blue plastic diamonds and signs in northern NM and southern CO

Sandia Nordic Ski Club (SNSC)

- Trails constructed with rented mini-excavator to move soil, rocks, and tree stumps
- 10-ft wide trail for classic skiing & skating (like ice skating with lightweight skis)
- Skiers follow trails groomed with snow-All Terrain Vehicle with 4 powered tracks
- Several kilometers of trails between 10K S Trailhead and Ellis TH on Sandia RD

Difficulty Rating of Trails

Easiest (Skiers with little or no experience)

- * Maximum Slope – 5%
- * Trail Head Marking – Green
- * Typical Length – 2 to 3 miles

More Difficult (Experienced skiers who can turn and stop)

- * Maximum Slope – 10%
- * Trailhead Marking – Blue
- * Typical Length – 3 to 5 miles

Most Difficult (Very experienced and expert skiers)

- * Maximum Slope – 15%
- * Trailhead Marking – Black
- * Typical Length – 5 to 10 miles or more

Photographs in Following Areas

- A. Sandia Ranger District
- B. Jemez Ranger District
- C. Valles Caldera National Preserve
- D. Red River/Enchanted Forest Ski Center
- E. Chama/Cumbres Pass/La Manga Pass

Trail Maintenance

Jack Pardee using pole saw at age 80 in Jemez Mtns



Corral Canyon Trail Maintenance in Jemez



Log Removed



Corral Canyon Trail at Peralta Canyon Overlook
Sandia Mountains on Horizon



Logs on East Fork East Loop Trail



Trail Open after Logs Cut



Easy to Move Short Piece Cut Out



Large Pines Blown over during High Wind



Removing Small Log on Coyote Call Loop Trail Valle Grande in the Background



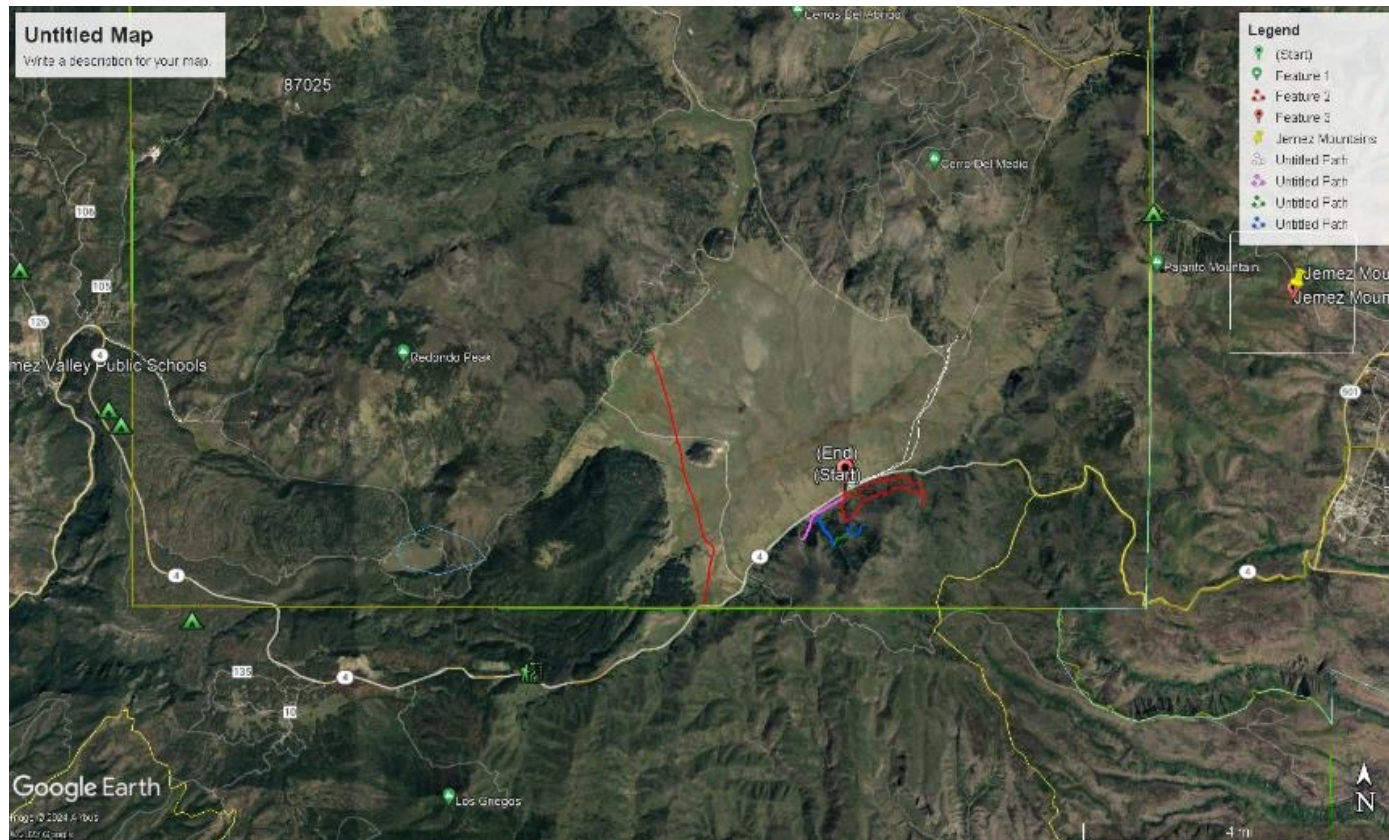
Very Large Fir Fell on Hillside and Rolled Down onto Coyote Call Trail
Using a Katanaboy Saw to Cut Small Fir



Roots on Right Side Were Cut so Skiers Could Pass Root Ball



Google Earth Satellite Photo of Jemez Area



East Fork Canyon in Jemez Mountains Skiing on Frozen Stream



Los Griegos Parking Lot in a Low Snow Year Ladera Trailhead



Skiing High on Upper Road on Los Griegos Mountain
Usually Excellent Snow on North Facing Slope



Upper End of Lower Los Griegos Road



East Rim of Valles Caldera West of Los Alamos



Pipe Line Road Leading Down to Los Alamos on East Side of the Valles Caldera Rim



Enchanted Forest Cross Country Ski Center Parking Lot East of Red River



Steve Romero Skiing in Classic Track at Enchanted Forest
Skating Track is on Right Side



Skiing Past Old Log Building in Western Part of Enchanted Forest



Western Edge of Enchanted Forest Center
with Wheeler Peak and Taos Ski Area in Background



Enchanted Forest Warming Hut



Family Skiing Western Part of Enchanted Forest Center



Skiing in Upper Red River Valley



Skier in the Big Ditch in Upper Red River Valley
Built to Take Red River Water Several Miles East to Elizabeth Town



Ore Mill in Pioneer Canyon near Red River



Ore Processing Equipment In Mill near Red River



Los Pinos Canyon North of Cumbres Pass
Cumbres and Toltec Scenic Railroad Follows this Canyon



Cathy Hiebert on Ridge West of Cumbres Pass on Ski Club Trip



Apache Canyon near Cumbres Pass
Road Leads to the South from Colorado into New Mexico



Looking from Coyote Call West into the East Part of Valle Grande
Cerro Del Medio on the Horizon



Log Landing Road on Valles Caldera National Preserve South of NM-4



West End of Valle Grande
with South Mountain and La Jara near the Photo Center



Coyote Call Trailhead across NM-4 from Valle Grande South Rim of Caldera on the Horizon



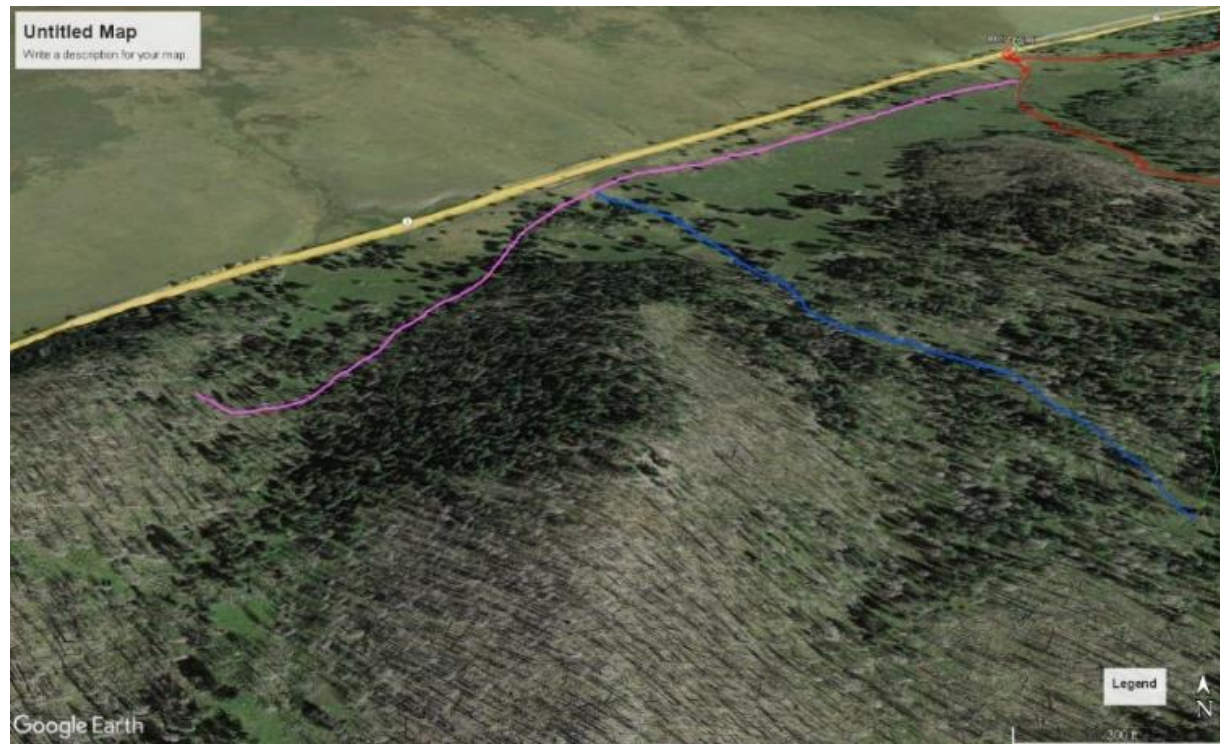
Skiers Arriving at Rabbit Ridge/Scooter Peak Saddle with East End of Valle Grande in the Background



Lunch Boulders in Saddle between Rabbit Ridge and Scooter
in Burned Forest in Coyote Call Area on VCNP



Google Earth Satellite Photo of Coyote Call Area S of Valle Grande. Yellow Line is NM-4 and Other Lines are Ski Trails



Log Landing Road on Valles Caldera National Preserve South of NM-4



Trail from Long Landing down to Coyote Call West Trail
Cerro Del Medio in Background



Michael Arndt Skiing down Trail from Log Landing to Coyote Call



GE Satellite Photo of Valles Caldera National Preserve with South Mountain and La Jara on West (Left) Side



Parking Lot at Missing Cabin Trailhead on VCNP
in SW Corner of Valle Grande



Log Cabin Built Decades ago as Movie Set in Western Part of Valle Grande. Last Used for Missing Movie



Ski Club Skiers on Porch of Missing Cabin Closed due to Poor Structural Condition



Skiing up to Missing Cabin Trailhead at NM-4 on VCNP



Corral Canyon Trailhead Parking



Corral Canyon Trail near NM-4
with Caldera South Rim on Horizon



Skiing Up Steep Part of Corral Canyon Trail



Just North of Junction Meadow where Corral Canyon Trail
Turns to the East



Skiing from Upper Corral Canyon to Overlook



Burned Forest on Ridge Top on Corral Canyon Trail
Elevation Increase from NM-4 Is 800 Feet



Lunch at the Overlook on Corral Canyon Trail



Looking Down Peralta Canyon from Ridge on Caldera Rim
to Sandia Mountains on Horizon



La Jara and Valle Grande Seen from Ridge on Corral Canyon Trail



Redondo Peak from Corral Canyon Ridge
with Valle Grande on Right Edge of Photo



Skiing around West End of Ridge to Tee Intersection



Tee Intersection on Forest Road 280 on South Rim of Caldera
Road Leads down about 2 Miles to NM-4



Skiers Starting Down Forest 280 toward NM-4
with Valle Grande in the Background



Skiers Have Returned to NM-4 Just E of Corral Canyon Trailhead
Highway is the Thin Brown Line across the Center of the Photo



View Looking to the NW at W End of Valle Grande
with South Mountain and La Jara in the Photo Center



Parking at Los Griegos Trailhead to Ski East Fork East Loop
Trailhead is across NM-4 in the Distance



Skiing up Small Canyon to Saddle on East Fork Ridge East Loop Trailhead is in Saddle



Loop Trail Starts to Skier's Right and Descends to Old Road
on North Side of Ridge



Skiing in Excellent Snow on Loop Road on North Side of Ridge



Ski Club Volunteers Cut Log across Trail on North Side of Ridge Many Years Ago



Descending to One of the Switchbacks on the North Side of the Ridge



Another View of Road with Excellent Snow on the North Side of the Ridge



Very Large Fir Tree along this Excellent Trail



Lunch in the Sun on South Side of Loop Trail



Skiing to the W on East Fork Ridge with Redondo Peak on Right
in a Burned Area



Glenn Beard Skiing on East Fork Ridge Trail with Redondo Peak in Background



East Fork Trail Leads to Meadow with View of Redondo Peak
Follow Mistletoe Canyon Trail to the S Back to NM-4



Coyote Call and Coyote Call West Trailhead in VCNP on NM-4
with Rabbit Ridge in Background



Trail across Meadow to the West with NM-4 on the Right
and Caldera South Rim on the Left



Sam Beard and Michael Arndt Skiing in Coyote Call West Area with Valle Grande in Background



Coyote Call West Trail on Easy Old Road
following North Side of South Rim



Sam and Michael on Coyote Call West Trail on Old Road
Leading toward Del Norte Pass Road



Two Ski Club Members Having Lunch on a Log on Coyote Call West Trail



Coyote Call Route along Old Road continues to the West around the ridge



Lunch Stop in Burned Forest on West Trail



Looking Northeast across Coyote West Meadow past NM-4
to Valle Grande



10K North and South Trailheads on NM-536 in Sandia Mountains



Michael Arndt Nailing Blue Diamond to a Tree on Challenge Trail Reroute near 10K South Trailhead



Michael Arndt Using a Katanaboy Saw to Cut this Small Log
across the Rerouted Challenge Trail near 10K Trailhead



Log Has Been Removed and the Trail is now Open.



View of Sangre de Cristo Mountains from Challenge Trail



Sheriff's Deputies are Investigating the Wrecked Truck that Went over the Guard Rail and Hit the Tree Below



Front Seat Area of Truck Was Crushed against the Tree.
Later Memorials Here Indicate That There Were One or More
Fatalities



Michael Is Cutting the Hang-up with His Chain Saw



Tree Is No Longer over the Trail.
We Removed It after the Snow Melted.



Tree down over the Trail



Michael Removing Trees and Limbs with His Chain Saw



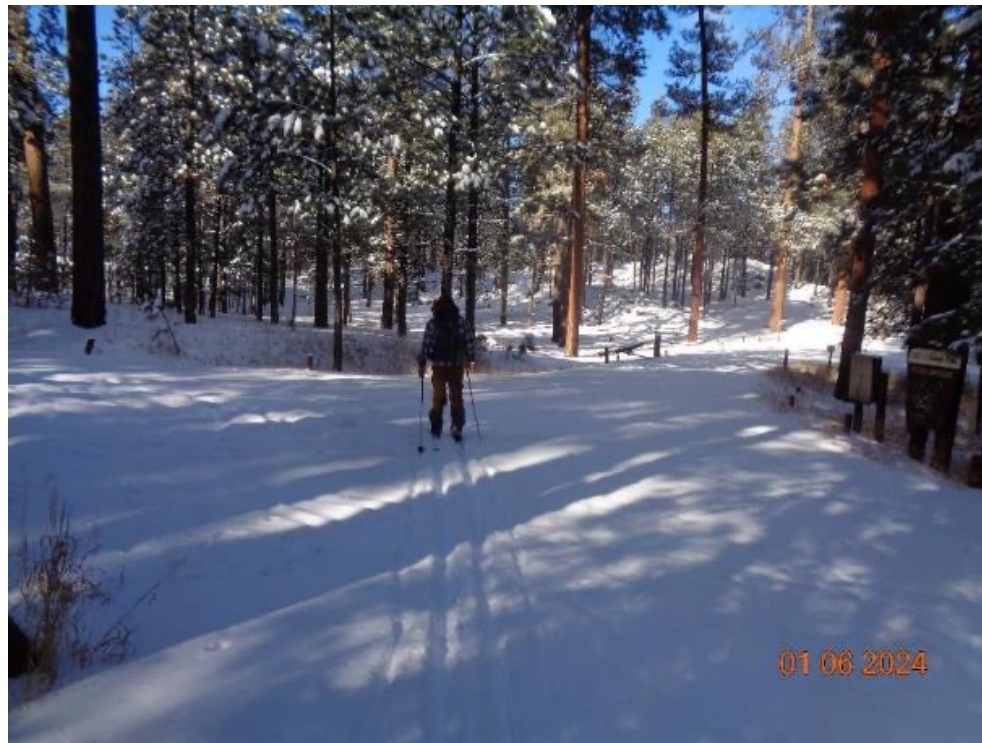
A Large Group at San Diego Overlook Parking Lot across NM-4
from Redondo Campground



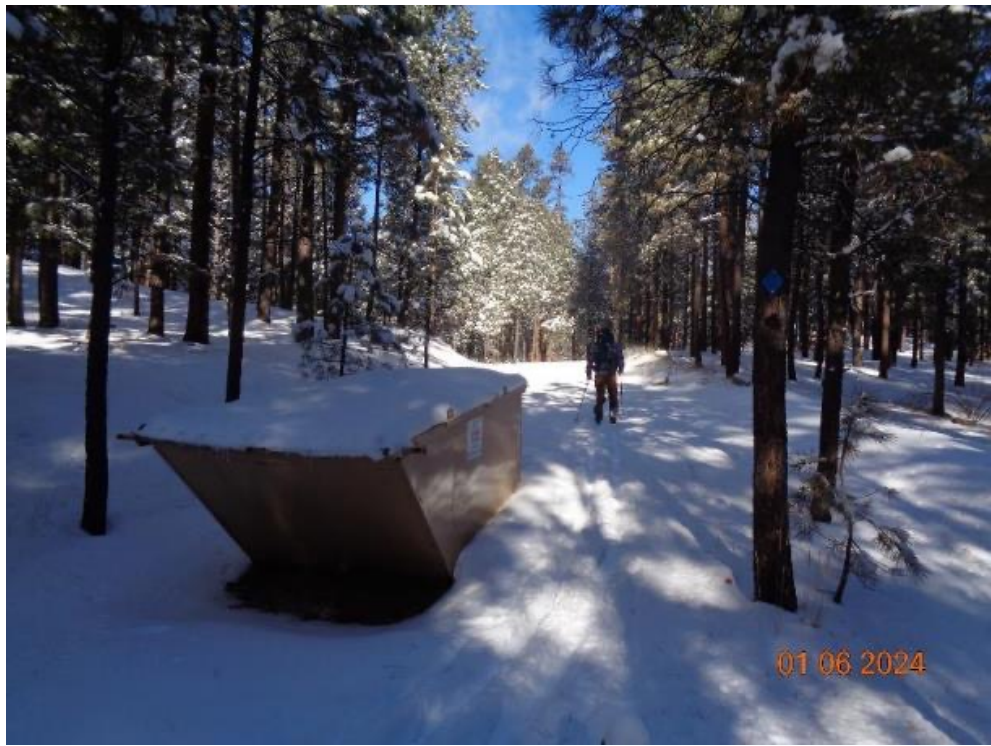
San Diego Overlook Parking Lot in Jemez Mountains
Redondo Campground is across NM-4 Highway



Skiing on Redondo Campground Road at the Entrance
Roads are Level and Very Easy to Ski



Loop Trail Leaves the Campground and Follows an Old Road
Note the Blue Diamond on the Tree on the Right



Skiing Down Old Road Adjacent to the Highway



Skiing Away from the Highway



Skiing Fresh Snow on Easy Loop Trail



Linda Katonak Skiing Redondo Loop Trail around the Campground in Falling Snow



Twin Craters Trail Turns Right Here near NM-4



Michael in Big Pines on Twin Craters Trail near Redondo CG



Recent Snowfall on Small Firs at East End of Meadow



Redondo Peak Seen through the Pines on Loop Trail



A Large Group on the Redondo Loop Trail
One Year We Had 30 Skiers on this Outing to Redondo CG



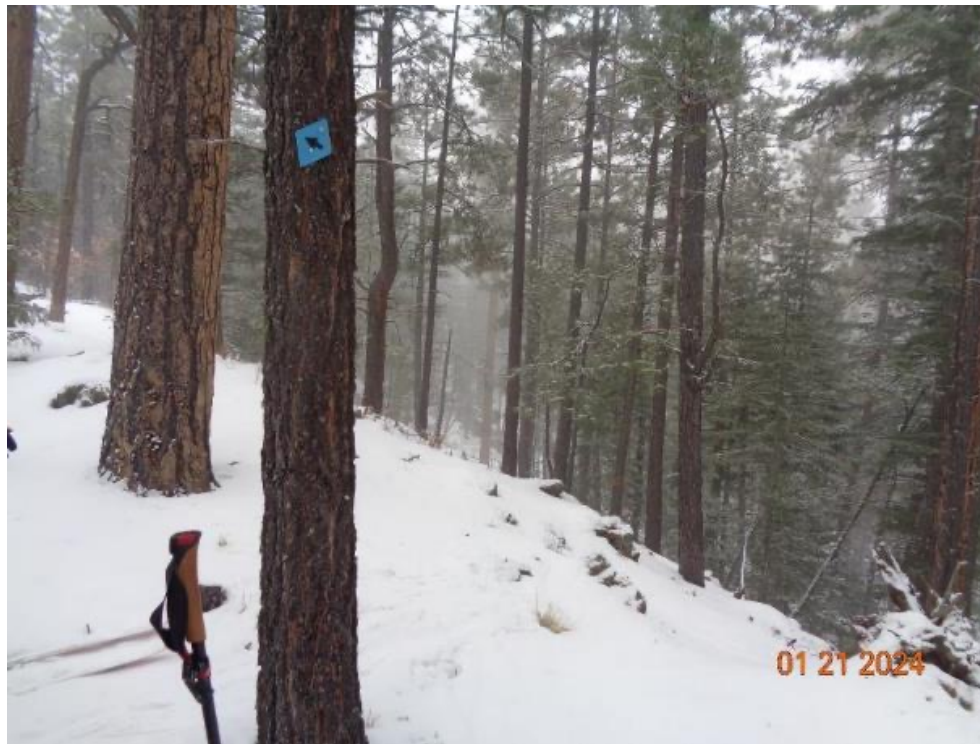
Lunch Time on Loop Trail neat NM-4



Looking into Hydrothermal Explosion Crater Found by Sam Beard in the 1970s



Crater Is 500 feet in Diameter and 70 to 100 feet Deep
Formed by Steam Explosion when Ground Water Hits Magma



Final View of Redondo Peak on Horizon and South Mountain
and La Jara Mountain in Center of Photo

