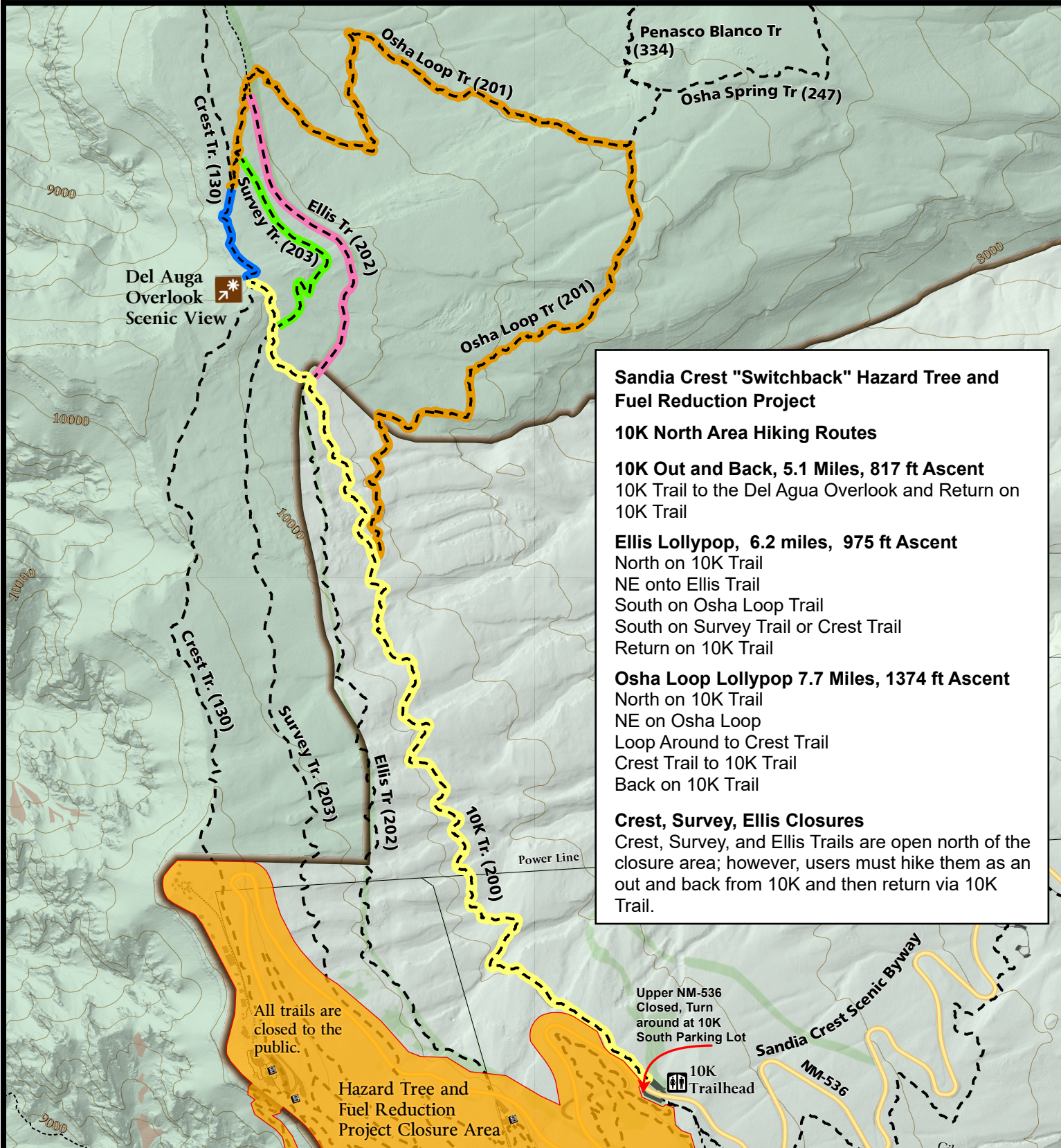




**North 10K Trail Hiking Area Trail Map (Trails Open Outside Closure Area)**

**Sandia Ranger District | Cibola National Forest & National Grasslands**



**Sandia Crest "Switchback" Hazard Tree and Fuel Reduction Project**

**10K North Area Hiking Routes**

**10K Out and Back, 5.1 Miles, 817 ft Ascent**  
10K Trail to the Del Agua Overlook and Return on 10K Trail

**Ellis Lollypop, 6.2 miles, 975 ft Ascent**  
North on 10K Trail  
NE onto Ellis Trail  
South on Osha Loop Trail  
South on Survey Trail or Crest Trail  
Return on 10K Trail

**Osha Loop Lollypop 7.7 Miles, 1374 ft Ascent**  
North on 10K Trail  
NE on Osha Loop  
Loop Around to Crest Trail  
Crest Trail to 10K Trail  
Back on 10K Trail

**Crest, Survey, Ellis Closures**  
Crest, Survey, and Ellis Trails are open north of the closure area; however, users must hike them as an out and back from 10K and then return via 10K Trail.

All trails are closed to the public.

Hazard Tree and Fuel Reduction Project Closure Area

Upper NM-536 Closed, Turn around at 10K South Parking Lot

10K Trailhead

Sandia Crest Scenic Byway  
NM-536

Coordinate System: NAD83 UTM Zone 13N  
Projection: Transverse Mercator  
Datum: North American 1983

Date: 4/17/2026

USDA is an equal opportunity provider, employer, and lender.

This product is reproduced from geospatial information prepared by the USDA Forest Service. Geospatial information and GIS product accuracy may vary. Using GIS products for purposes other than those for which they were created may yield inaccurate or misleading results. USDA Forest Service reserves the right to correct, update, modify, or replace this GIS products without notification.

